

# START

I thought i would document the process again as i try to improve on the last one. I've planned a couple of tweaks to the techniques and colours. The helmet has a white gel coat which will be scratched back to in certain areas, a thin grey primer coat and the first layer, the light grey Humbrol 147, which is actually blue/green/grey...

tip: reference pictures used from 'Boba Fett at the Art of Star Wars Exhibit', courtesy of TDH...

Humbrol 147 Light Grey Matt [14ml](#)



- thin coat of grey primer
- Airbrush 147 Light Grey Matt

# LEFT EAR

I used a water soluble white pencil to roughly outline the next layer detail, i've done this to ensure the scale of the layer is as accurate as possible. I also peeled back the liquid mask in areas with a compass point to create sharper detail where needed before painting.

Humbrol 28 Camouflage Grey Matt <a href="#">14ml</a>
Humbrol 34 White Matt <a href="#">14ml</a> / <a href="#">50ml</a>
Humbrol 60 Scarlet Matt <a href="#">14ml</a>
Humbrol 64 Light Grey Matt <a href="#">14ml</a>
Humbrol 78 Cockpit Green Matt <a href="#">14ml</a>
Humbrol 159 Khaki Drab Matt <a href="#">14ml</a>



1. Mask entire helmet except L/H ear
2. Airbrush '60 Scarlet Matt'
3. Liquid Mask '60 Scarlet Matt' detail
4. Airbrush '28 Camouflage Grey Matt' + '64 Light Grey Matt' mix (1:1)
5. Liquid Mask '28 Camouflage Grey Matt' + '64 Light Grey Matt' mix detail
6. Airbrush '78 Cockpit Green Matt' + '159 Khaki Drab Matt' mix (1:1)
7. Draw outline of L/H ear decal
8. Liquid Mask and tape L/H ear decal
9. Airbrush '34 White Matt'

tip: peel back the dry liquid mask with a point to adjust fine detail...

tip: spray the white in lots of thin coats as opposed to a couple of thick ones!

# BACK PANELS

Humbrol 11 Silver Metallic <a href="#">14ml</a> / <a href="#">50ml</a>
Humbrol 28 Camouflage Grey Matt <a href="#">14ml</a>
Humbrol 76 Uniform Green Matt <a href="#">14ml</a>
Humbrol 96 RAF Blue Matt <a href="#">14ml</a>
Humbrol 103 Cream Matt <a href="#">14ml</a>
Humbrol 106 Ocean Grey Matt <a href="#">14ml</a>



1. Draw the '147 Light Grey Matt' detail with white pencil on back panels
2. Liquid Mask '147 Light Grey Matt' detail & tape the whole helmet except back panels
3. Spray '11 Silver Metallic'
4. Draw '11 Silver Metallic' detail on back panels
5. Liquid Mask '11 Silver Metallic' detail on back panels
6. Spray '106 Ocean Grey Matt'
7. Draw '106 Ocean Grey Matt' detail
8. Liquid Mask '106 Ocean Grey Matt' detail
9. Spray '28 Camouflage Grey Matt' and then mist with '103 Cream Matt'
10. Draw the '28 Camouflage Grey Matt' & '103 Cream Matt' detail
11. Liquid Mask the '28 Camouflage Grey Matt' & '103 Cream Matt' detail
12. Spray the '76 Uniform Green Matt' & '96 RAF Blue Matt mix' (1:1)
13. Lightly buff the back panels with 0000 wire wool. The aim here is to thin the green layer slightly, don't over do it, it needs to be very subtle!

tip: use keyslots to determine scale and position of damage. If the light grey is not surrounded by silver, leave the liquid mask on!

tip: if the silver is not surrounded by grey, leave the liquid mask on! The grey damage within the silver on the R/H panel will be added as an individual layer later.

I 've always had mixed feelings about the 'creaminess' of the beige layer, its difficult to gauge as the green layer seems to reduce its tone. I've misted 103 on top of 28 so if needed i can use wire wool to buff the colour back slightly...

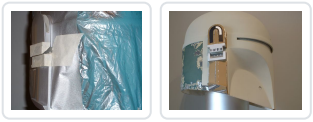
tip: watch out for the mid grey detail UNDER the green layer, Darth Nickel and myself have been working on a translucent green mix for the next layer...;)

tip: look out for the shape of the green areas!

tip: try to keep this layer slightly thinner so the grey and beige show through in certain areas! I went slightly too heavy with the paint, so the grey i was hoping would show through this layer is not really visible, when totally dry a buff with 0000 wire wool may work and will also tone down colour intensity... PS if you spot any detail i missed please keep it to yourself as i'm nursing a migraine from staring at the back of this helmet for 2 weeks....:D PPS thanks to Darth\_Nickel for helping me with the colour mix...

## RIGHT EAR

Humbrol 11 Silver Metallic <a href="#">14ml</a> / <a href="#">50ml</a>
Humbrol 34 White Matt <a href="#">14ml</a> / <a href="#">50ml</a>
Humbrol 79 Blue Grey Matt <a href="#">14ml</a>
Humbrol 85 Coal Black Satin <a href="#">14ml</a>
Humbrol 94 Brown Yellow Matt <a href="#">14ml</a>



1. Mask entire helmet except R/H ear pieces.
2. Airbrush R/H ear pieces '11 Silver Metallic'
3. Tape R/H ear sections to remain silver including inside where the stalk locates. Mount ear pieces onto helmet.
4. Liquid Mask '11 Silver Metallic' detail
5. Airbrush '79 Blue Grey Matt'
6. Liquid Mask '11 Silver Metallic' and '79 Blue Grey Matt' detail
7. Airbrush '94 Brown Yellow Matt'
8. Draw black arch and white half arch on outer cap, trace the white arch onto a piece of masking tape, cut the white arch out with sharp knife.
9. Liquid Mask black arch

10. Airbrush '34 White Matt'
11. apply masking tape half arch
12. Airbrush '85 Coal Black Satin'
13. Using thin strips of masking tape, mask the nine stripes below black arch, brush on '85 Coal Black Satin'

tip: keep silver liquid masking to an absolute minimum, detail can be scratched through the following layers with a compass point...

## LOWER CHEEKS

Humbrol 11 Silver Metallic <a href="#">14ml</a> / <a href="#">50ml</a>
Humbrol 78 Cockpit Green Matt <a href="#">14ml</a>
Humbrol 79 Blue Grey Matt <a href="#">14ml</a>
Humbrol 147 Light Grey Matt <a href="#">14ml</a>



1. Mask entire helmet except lower cheeks
2. Airbrush '11 Silver Metallic'
3. outline '11 Silver Metallic' damage with pencil
4. Liquid Mask '11 Silver Metallic'
5. Airbrush '79 Blue Grey Matt'
6. Liquid Mask '79 Blue Grey Matt' detail
7. Airbrush right hand side of lower right cheek with green mix from back panels
8. liquid mask detail.
9. Airbrush '78 Cockpit Green Matt'

## DOME

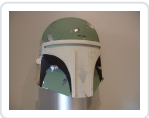
Humbrol 11 Silver Metallic <a href="#">14ml</a> / <a href="#">50ml</a>
Humbrol 27 Sea Grey Matt <a href="#">14ml</a>
Humbrol 78 Cockpit Green Matt <a href="#">14ml</a>
Humbrol 79 Blue Grey Matt <a href="#">14ml</a>
Humbrol 147 Light Grey Matt <a href="#">14ml</a>



1. Mask entire helmet except dome
2. Liquid Mask '147 Light Grey Matt' areas in dent, on top scratch and above keyslots on dome back.
3. Airbrush '11 Silver Metallic'
4. Draw '11 Silver Metallic' detail
5. Liquid Mask '11 Silver Metallic' detail
6. Airbrush '27 Sea Grey Matt' in and around dent only
7. Liquid Mask '27 Sea Grey Matt' detail in and around dent
8. Airbrush '79 Blue Grey Matt' onto dome
9. Liquid Mask '79 Blue Grey Matt' detail on dome
10. Airbrush '78 Cockpit Green Matt'

# UPPER CHEEKS

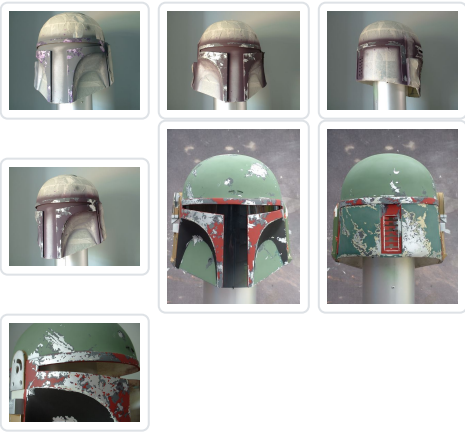
Humbrol 11 Silver Metallic <a href="#">14ml</a> / <a href="#">50ml</a>
Humbrol 33 Black Matt <a href="#">14ml</a> / <a href="#">50ml</a>
Humbrol 79 Blue Grey Matt <a href="#">14ml</a>



1. Mask entire helmet except upper cheeks
2. Liquid Mask base colour along upper cheek/mandible edge
3. Airbrush '11 Silver Metallic'
4. Liquid Mask '11 Silver Metallic' detail
5. Airbrush '79 Blue Grey Matt'
6. Liquid Mask '79 Blue Grey Matt' detail
7. Airbrush '33 Black Matt'

# MANDIBLES

Humbrol 11 Silver Metallic <a href="#">14ml</a> / <a href="#">50ml</a>
Humbrol 27 Sea Grey Matt <a href="#">14ml</a>
Humbrol 60 Scarlet Matt <a href="#">14ml</a>
Humbrol 73 Wine Matt <a href="#">14ml</a>
Humbrol 104 Oxford Blue Matt <a href="#">14ml</a>
Humbrol 147 Light Grey Matt <a href="#">14ml</a>



1. Mask entire helmet except mandibles and trim
2. Draw '147 Light Grey matt' detail
3. Liquid Mask '147 Light Grey matt' detail
4. Airbrush '11 Silver Metallic'
5. Draw '11 Silver Metallic' detail
6. Liquid Mask '11 Silver Metallic' detail
7. Airbrush '27 Sea Grey Matt'
8. Draw '27 Sea Grey Matt' detail
9. Liquid Mask '27 Sea Grey Matt' detail
10. Airbrush '73 Wine Matt' + '104 Oxford Blue Matt' mix (1:1)
11. Draw '73 Wine Matt' + '104 Oxford Blue Matt' mix detail
12. Liquid Mask '73 Wine Matt' + '104 Oxford Blue Matt' mix
13. Airbrush '60 Scarlet Matt'
14. gently buff the entire helmet with 0000 wire wool. This smoothes the surface slightly and brings the colours together. This also gives a flat surface for the weathering process...
15. 'super detail' the upper R/H mandible area with grey, purple and red, a separate mask for each colour. Masking tape off the general area and pick out the detail with liquid mask, outline with a pencil first...

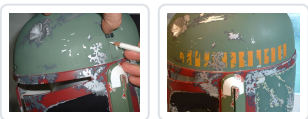
tip: lift masking tape on dome etc to match damage between different sections...

Remove liquid mask when paint is touch dry, approx. 3-4 hours...

tip: carefully remove liquid mask after 2-3 hours, then gently remove the white pencil marks with a damp sponge...

# KILL STRIPES

Humbrol 82 Orange Lining Matt <a href="#">14ml</a>
Humbrol 154 Insignia Yellow Matt <a href="#">14ml</a>

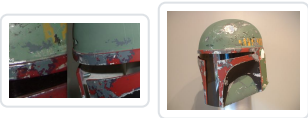


1. I use a stencil to outline the kill stripes between each layer, this allows for some movement to aline the details...
2. outline kill stripes with stencil and white pencil, masking tape and liquid mask off the kill stripes.
3. airbrush '154 Insignia Yellow Matt' fade gently to '82 Orange Lining Matt' towards the rear of the helmet.
4. start to scratch in the key details around the helmet with compass point...

# WEATHERING

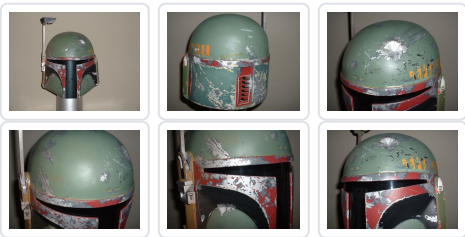
The weathering process i intend to use involves grey,brown and black airbrushing layers. This will have some effect on the finished colour. I'm also going by the AOSW reference pics, so here's a comparison shot...

Humbrol 33 Black Matt <a href="#">14ml</a> / <a href="#">50ml</a>
Humbrol 79 Blue Grey Matt <a href="#">14ml</a>
Humbrol 34 White Matt <a href="#">14ml</a> / <a href="#">50ml</a>
Humbrol 32 Dark Grey Matt <a href="#">14ml</a>
Humbrol 62 Leather Matt <a href="#">14ml</a>
Humbrol 93 Desert Yellow Matt <a href="#">14ml</a>
Humbrol 103 Cream Matt <a href="#">14ml</a>



1. start to weather helmet using '33 Black Matt', '34 White Matt', '32 Dark Grey Matt', '62 Leather Matt' and a white and dark brown water soluble pencil...
2. The light green weathering under the kill stripes is thinned Humbrol white, applied with a small brush, allow to dry and build up in layers to achieve the correct look...
3. weathering with '93 Desert Yellow Matt' around trim and arrows
4. shading with '32 Dark Grey Matt' along edge of lower cheeks.
5. splatters with '62 Leather Matt', '103 Cream Matt', '79 Blue Grey Matt'
6. scuffs brown and white caran dache pencil.
7. scuffs by kill stripes layer with '33 Black Matt' and '62 Leather Matt' with white spirit.
8. Back panels - weather green with wire wool as per ref pics and light shading with '32 Dark Grey Matt'

# FINISHING



1. use Superjedi's recommended Woodland Scenics decals (MG 737) for ear decals
2. seal with satin cote

-finished-(almost)

