



Left Shoulder Bell



Right Shoulder Bell

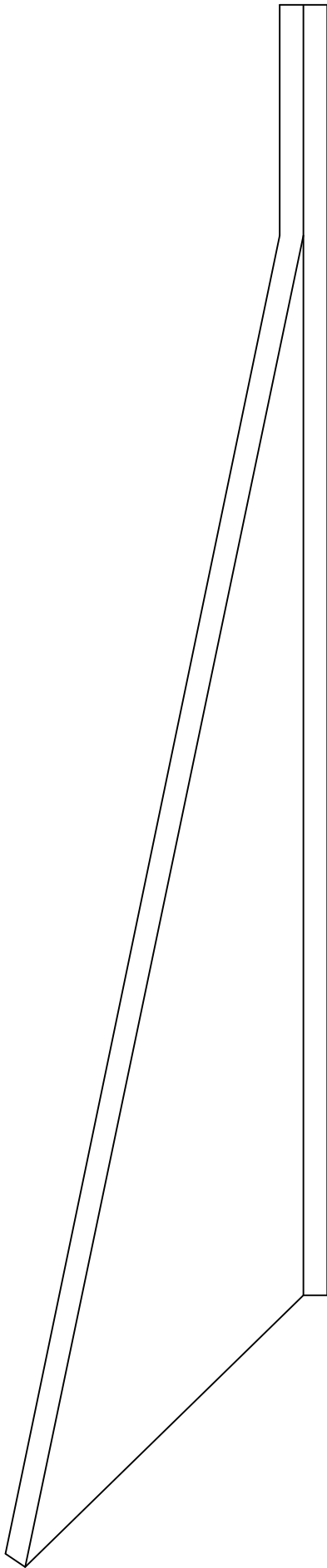


Right Boot Armor

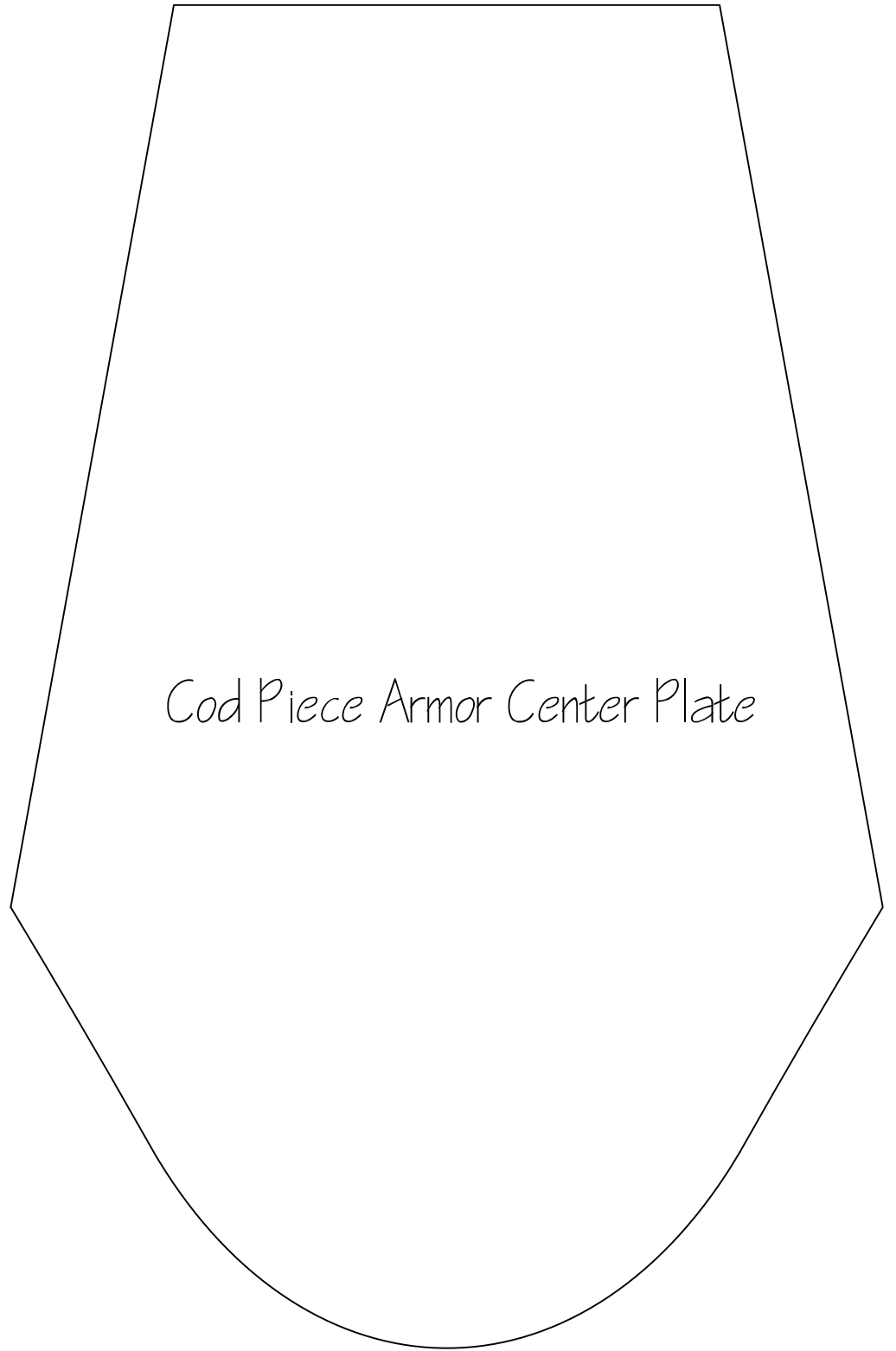
The image shows a technical pattern for a right boot armor. It is a large, irregular shape with a curved left side and a pointed right side. The pattern is defined by a black outline on a white background. The text "Right Boot Armor" is written in a cursive font inside the pattern.



Left Boot Armor

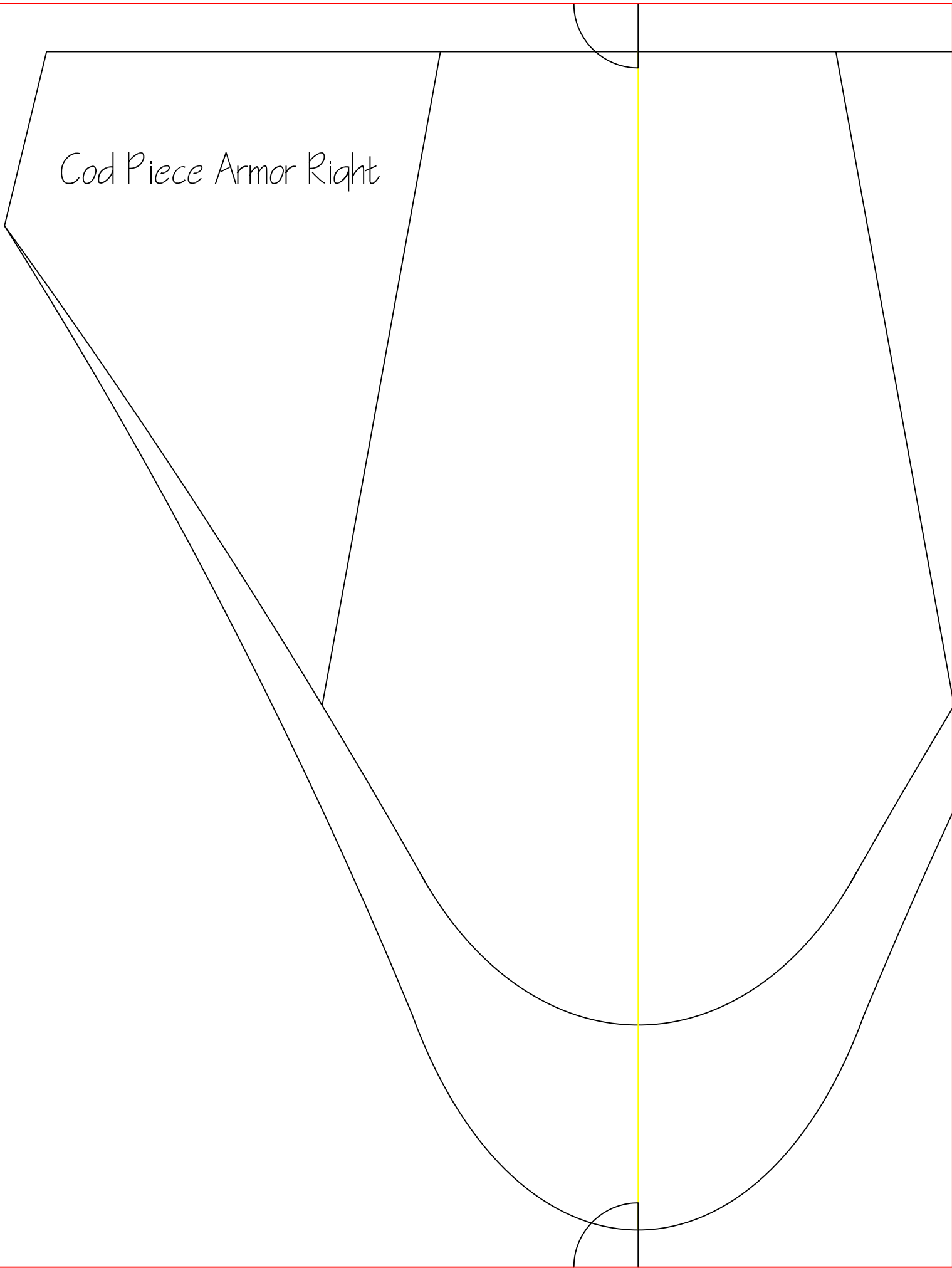


Cod Piece Armor Center Plate

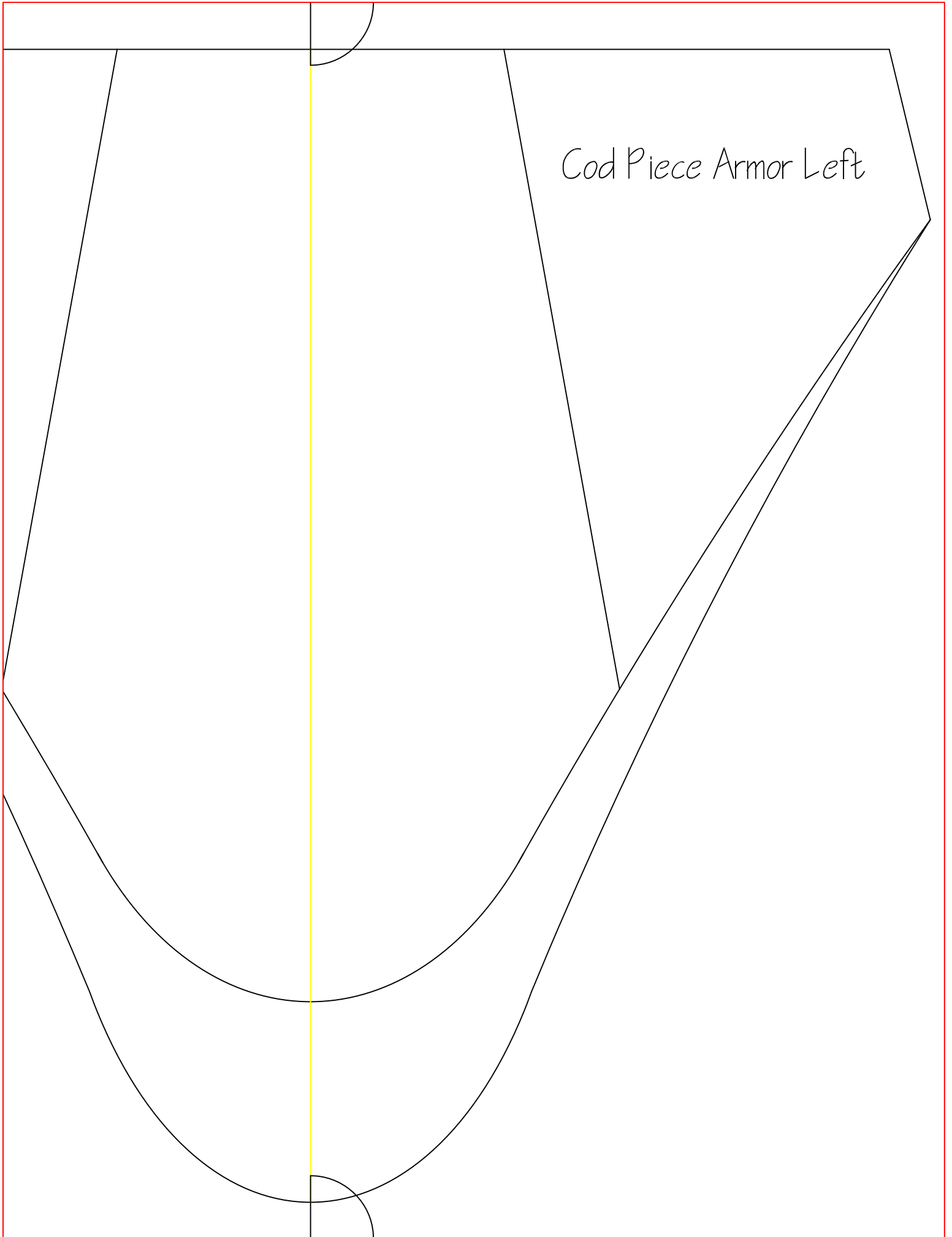


Cod Piece Armor Side View

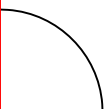
Cod Piece Armor Right



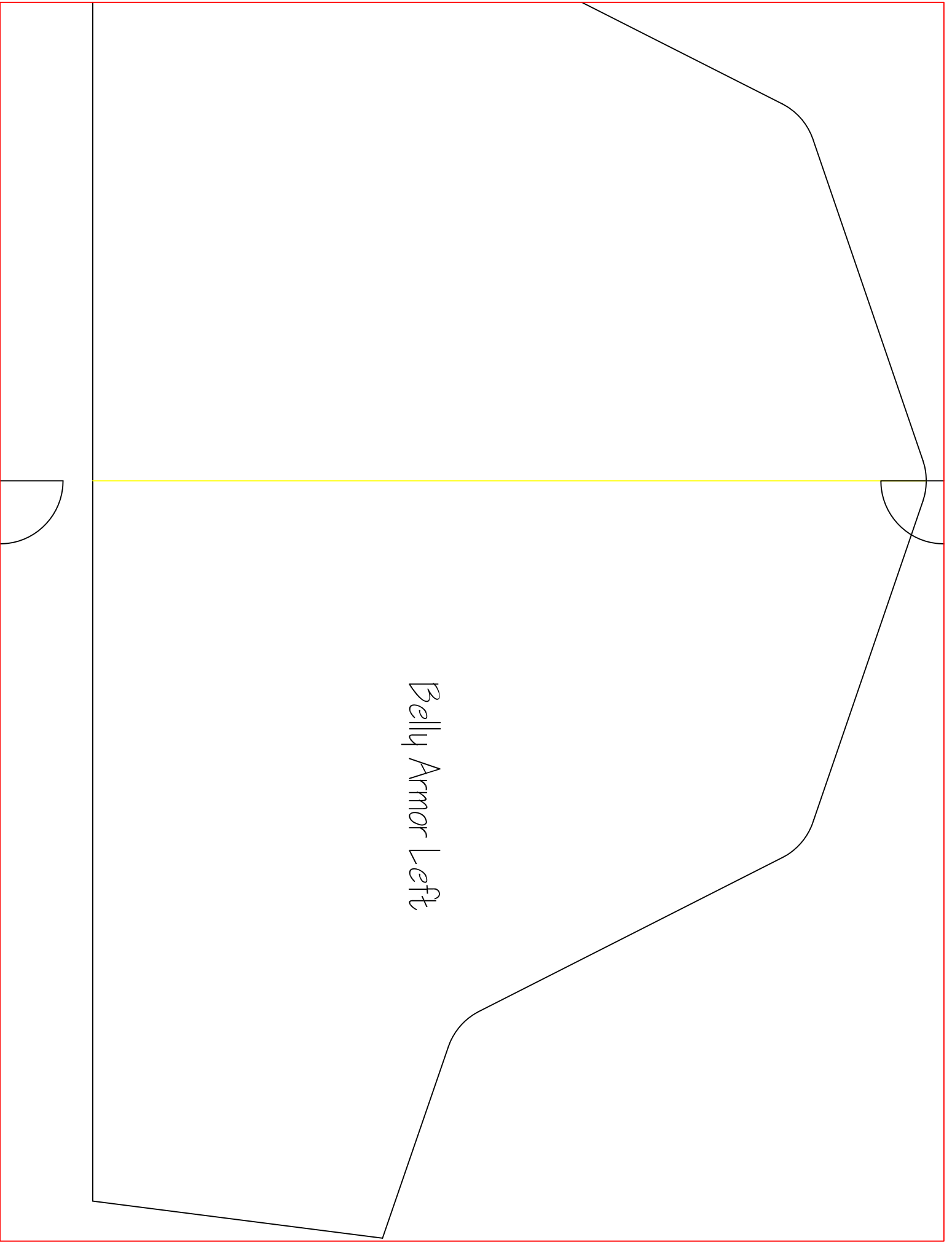
Cod Piece Armor Left



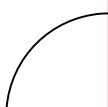
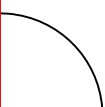
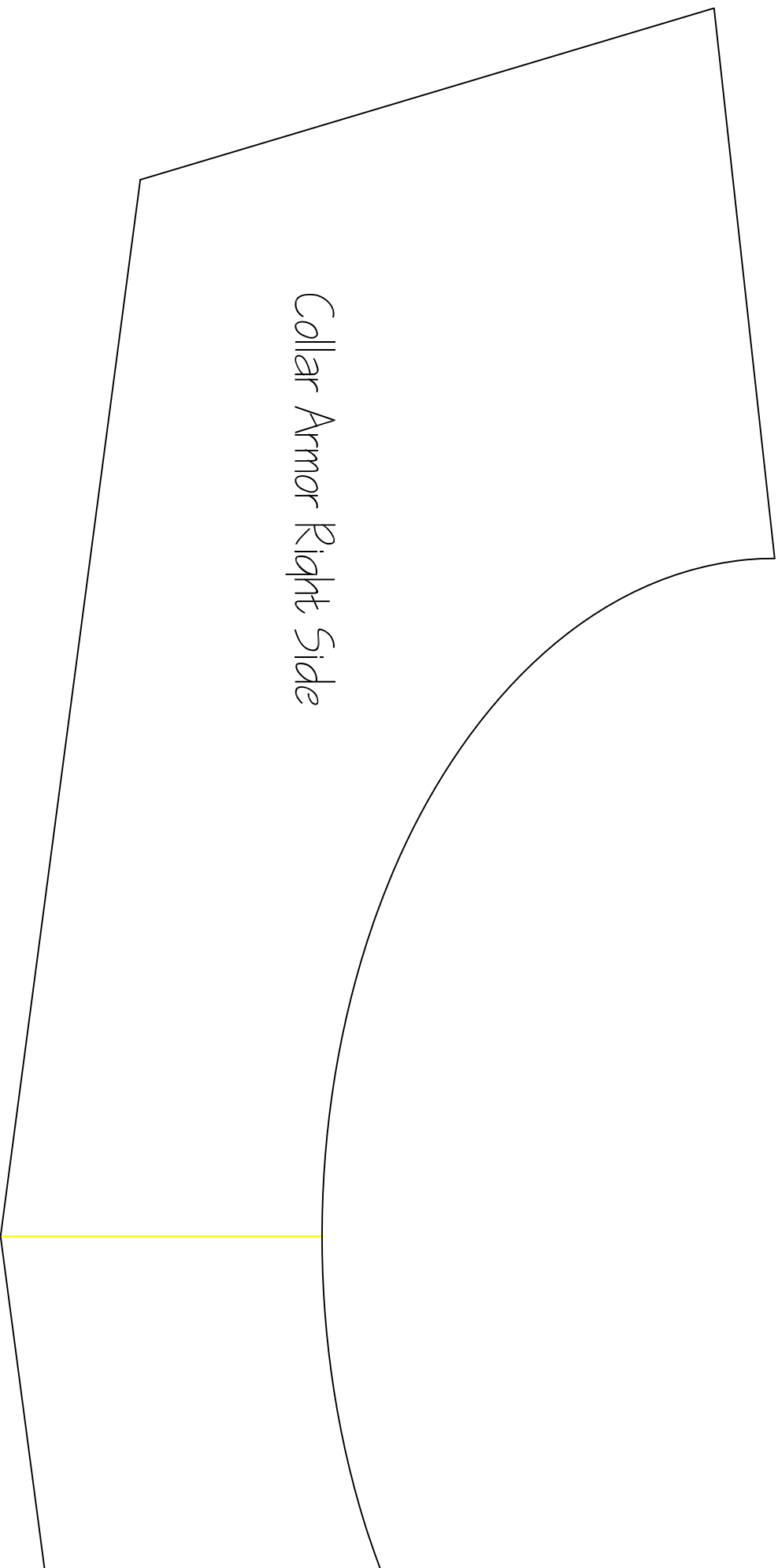
Belly Armor Right



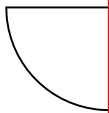
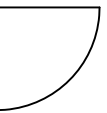
Belly Armor Left



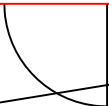
Collar Armor Right Side



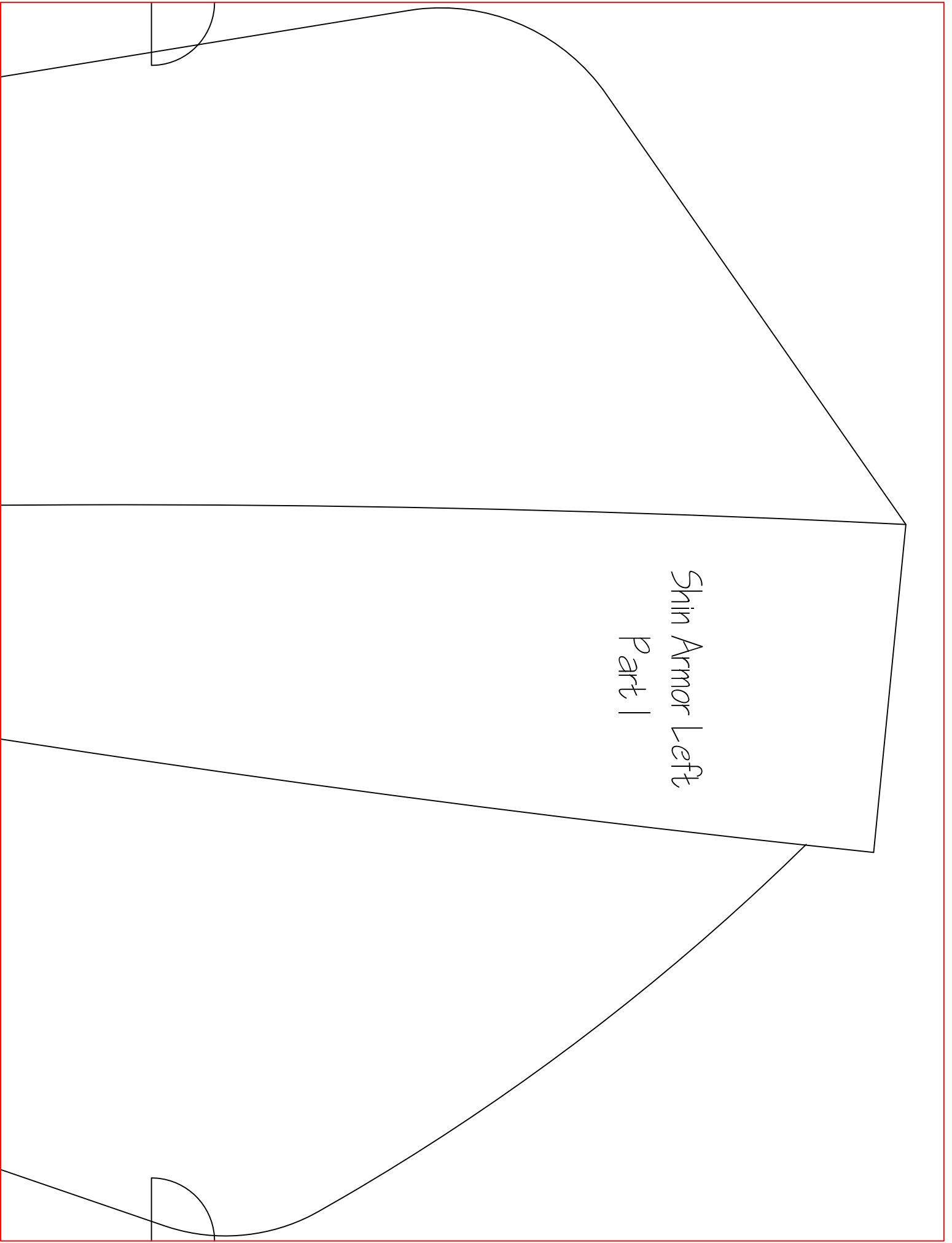
Collar Armor Left Side



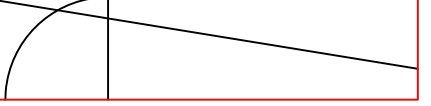
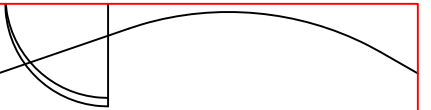
Shin Armor Left
Part 2



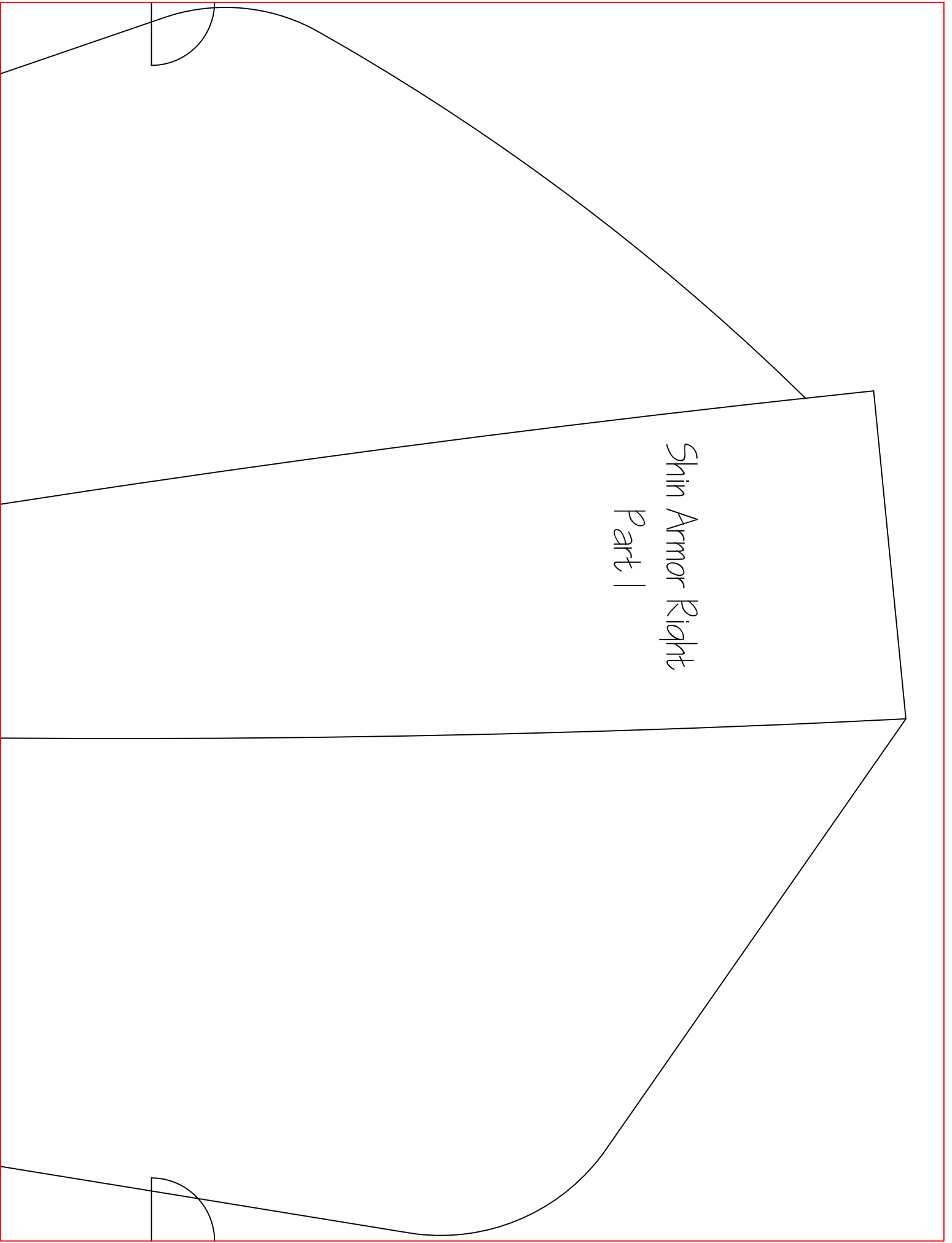
Shin Armor Left
Part 1



Shin Armor Right
Part 2

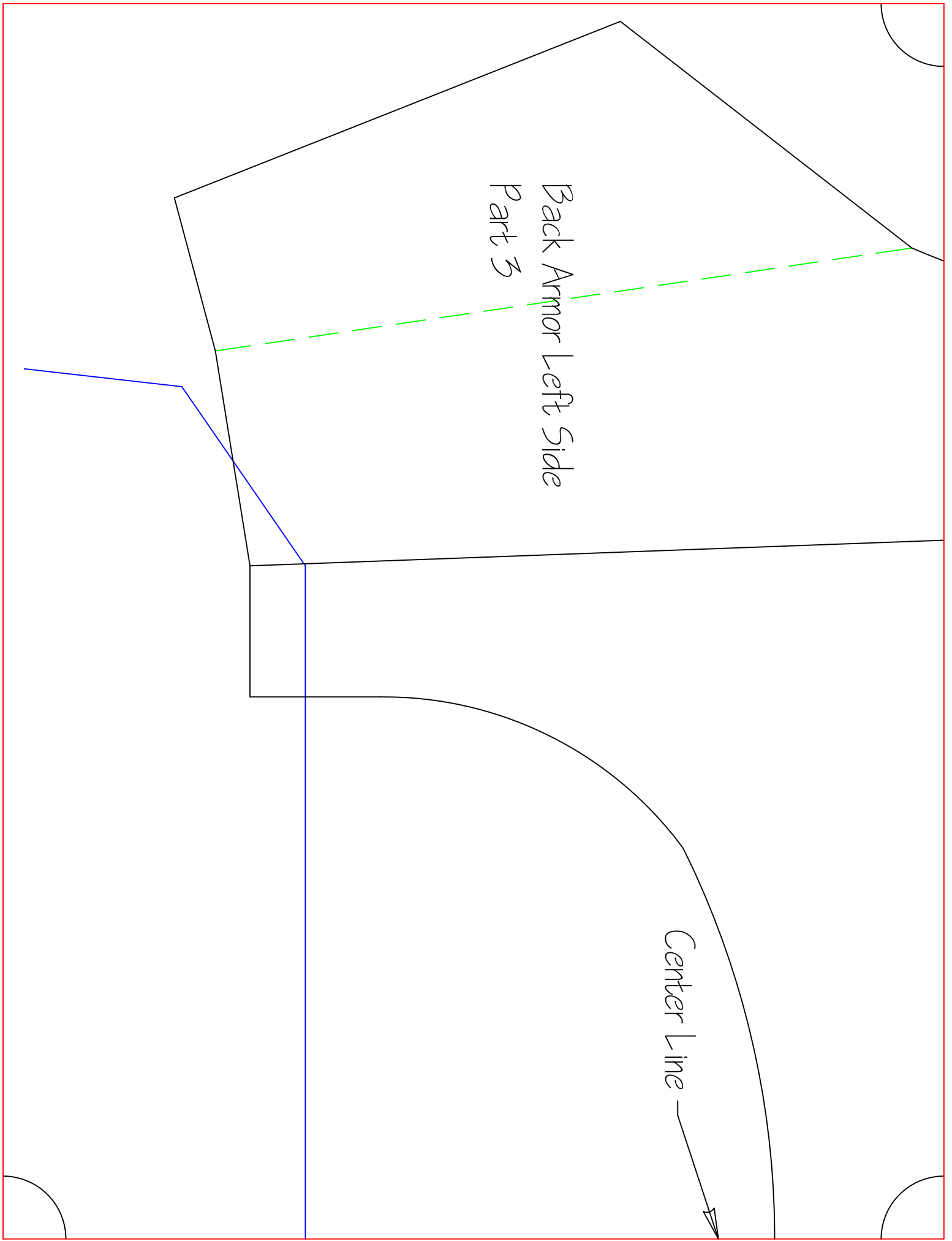


Shin Armor Right
Part 1



Back Armor Left Side
Part 3

Center line —



Back Armor Left Side
Part 2

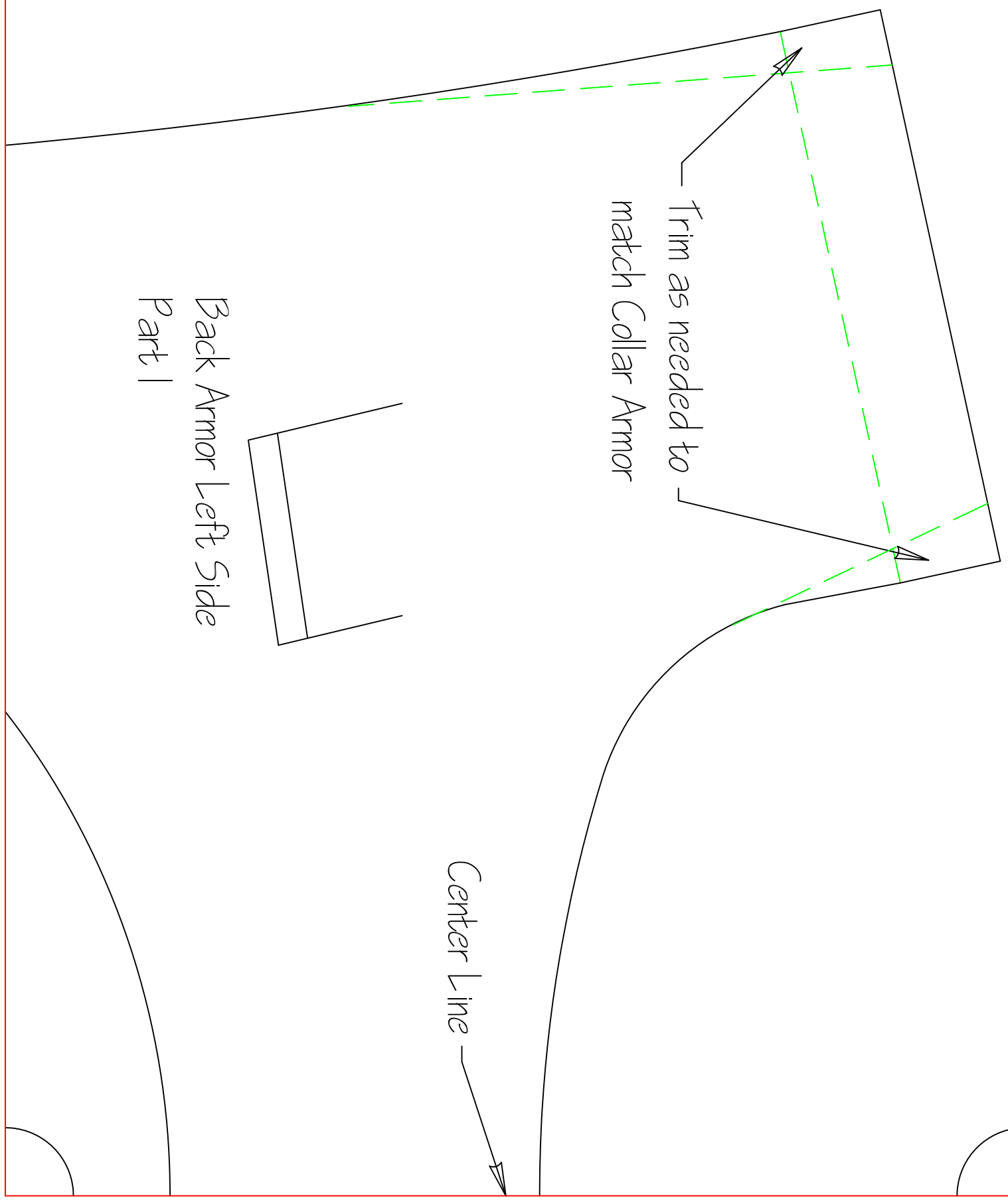
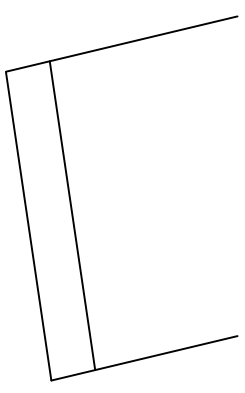
Center Line



Trim as needed to
match Collar Armor

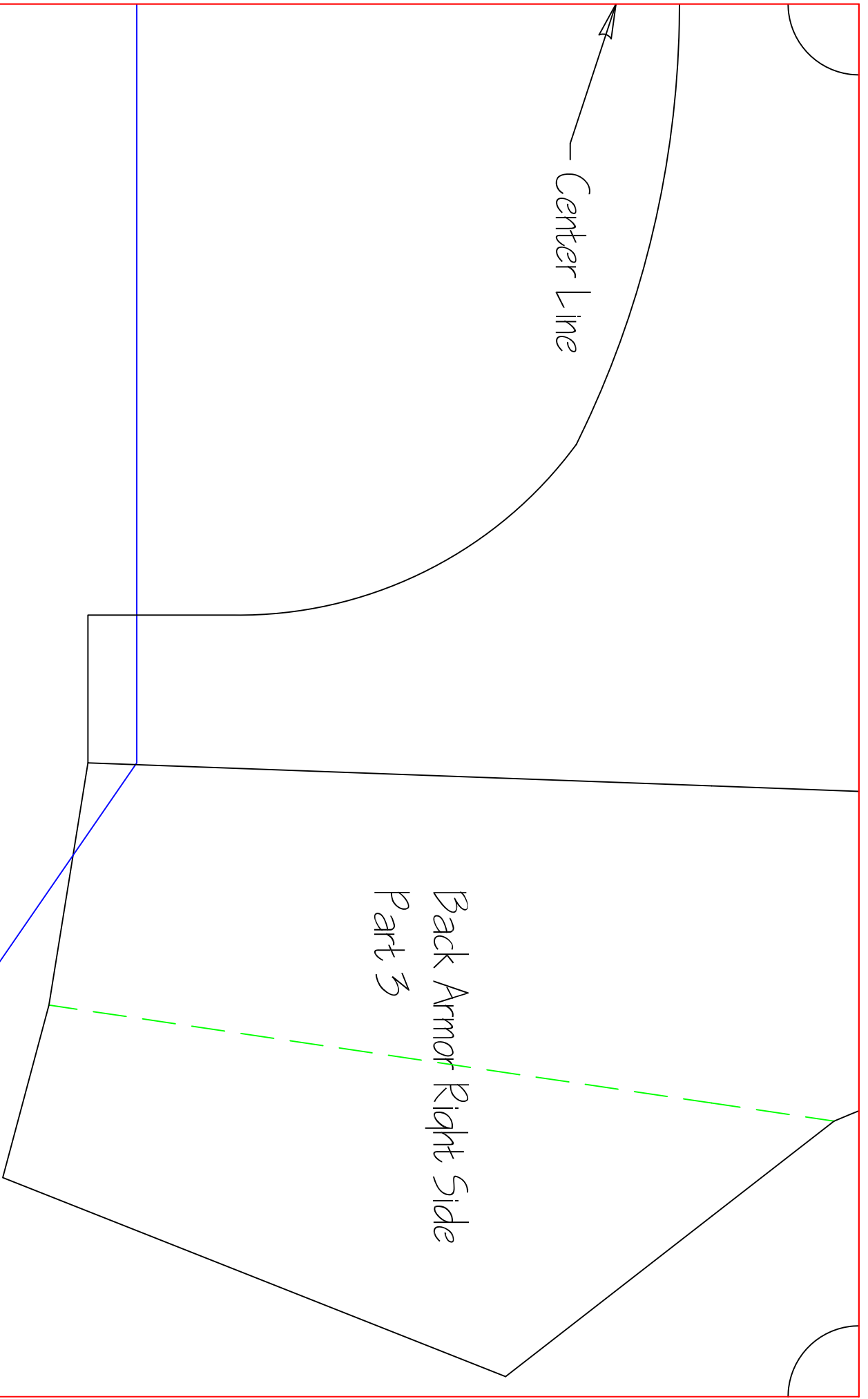
Center Line

Back Armor Left Side
Part 1



Center Line

Back Armor Right Side
Part 3



Back Armor Right Side
Part 2

Center Line



Center Line

Trim as needed to
match Collar Armor

Back Armor Right Side
Part 1

