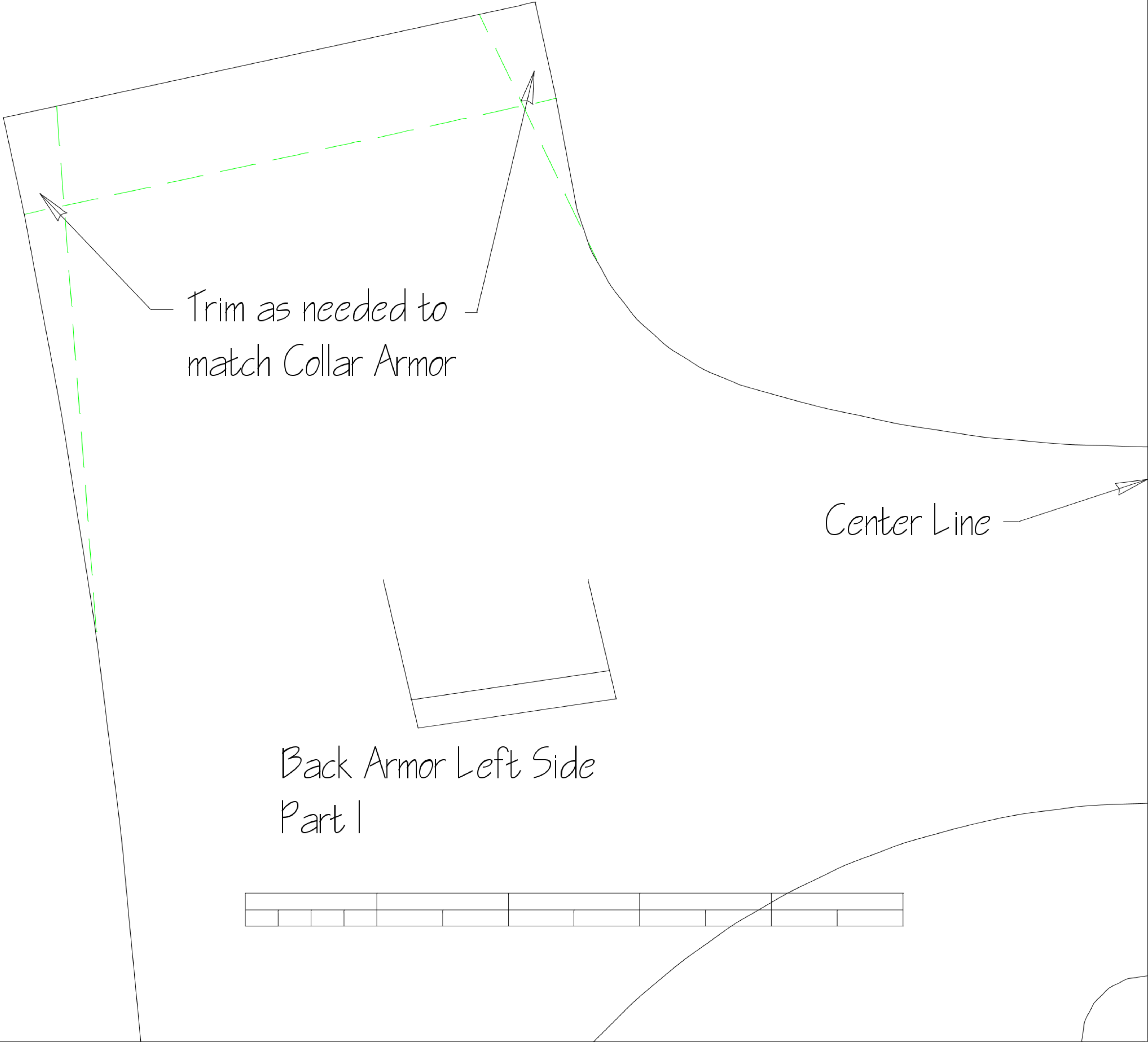


Size - small



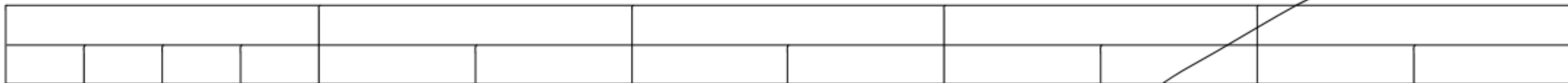
Trim as needed to
match Collar Armor

Center Line



Back Armor Left Side

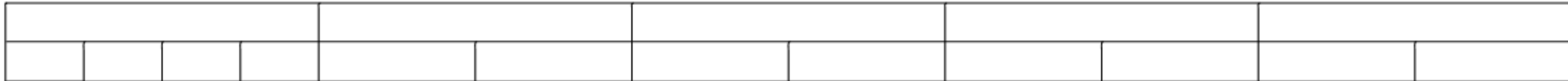
Part I



Size - small

Back Armor Left Side Part 2

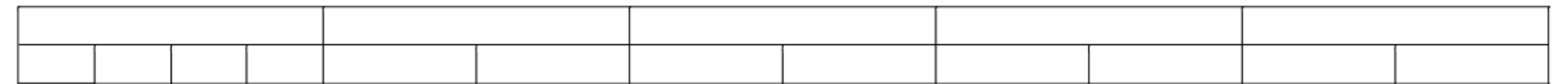
Center Line



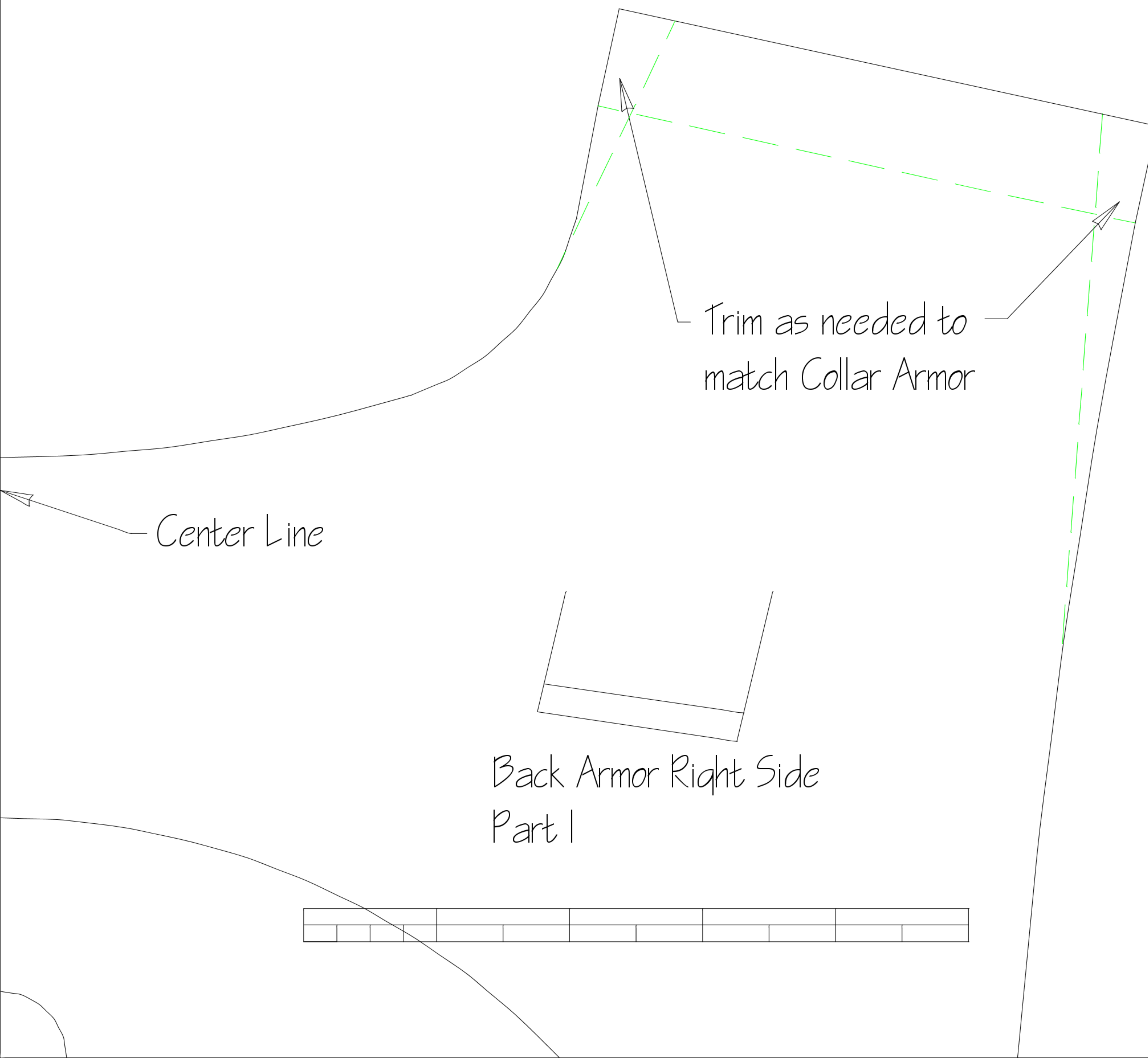
Size - Small

Back Armor Left Side Part 3

Center Line -

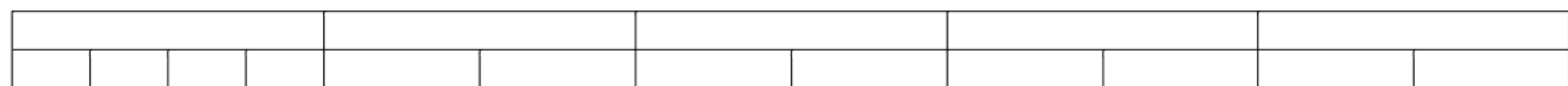


Size - Small

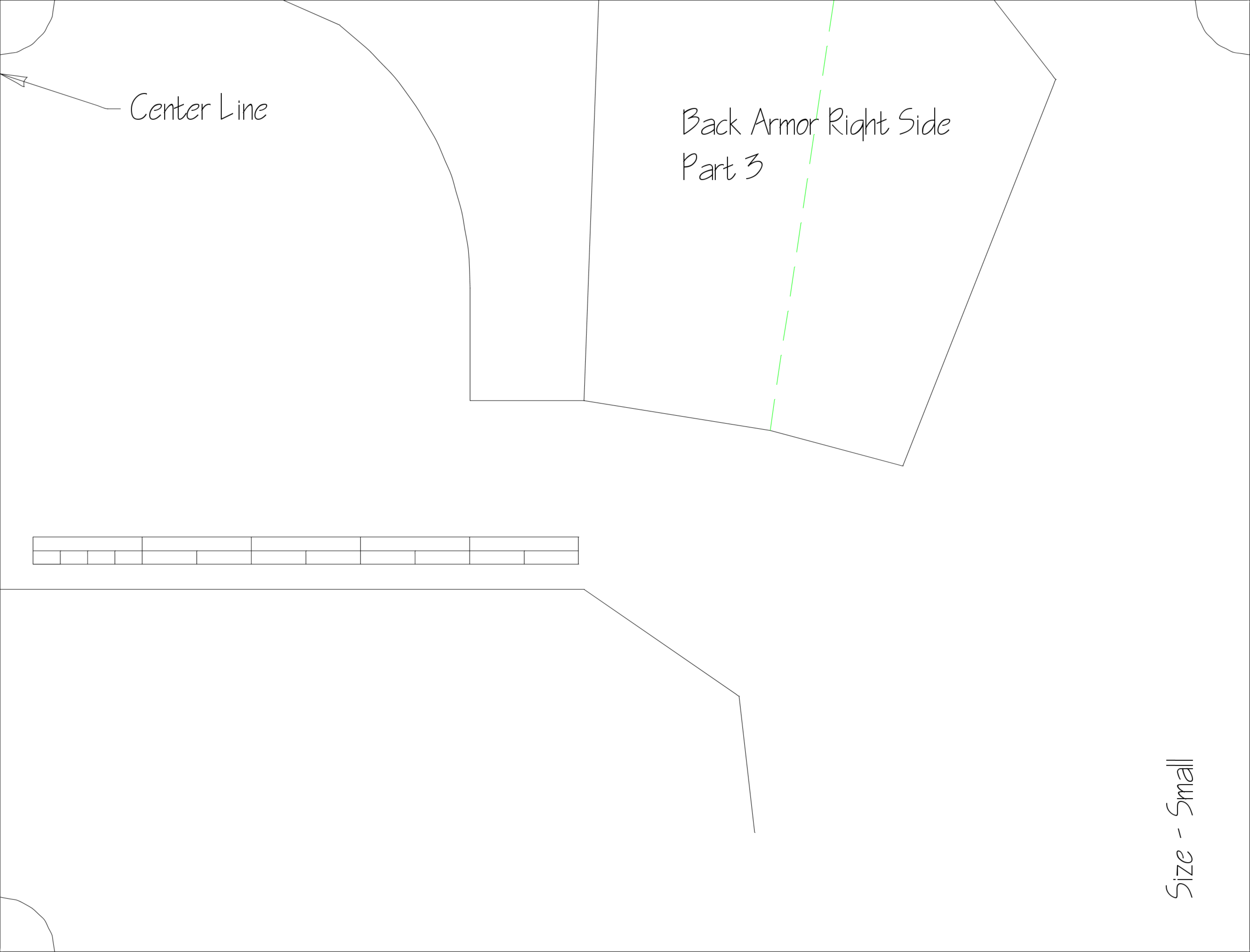


Back Armor Right Side
Part 2

Center Line

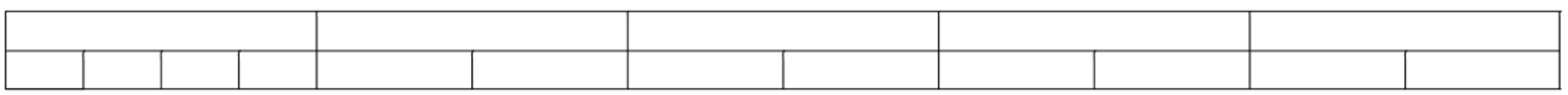


Size - Small

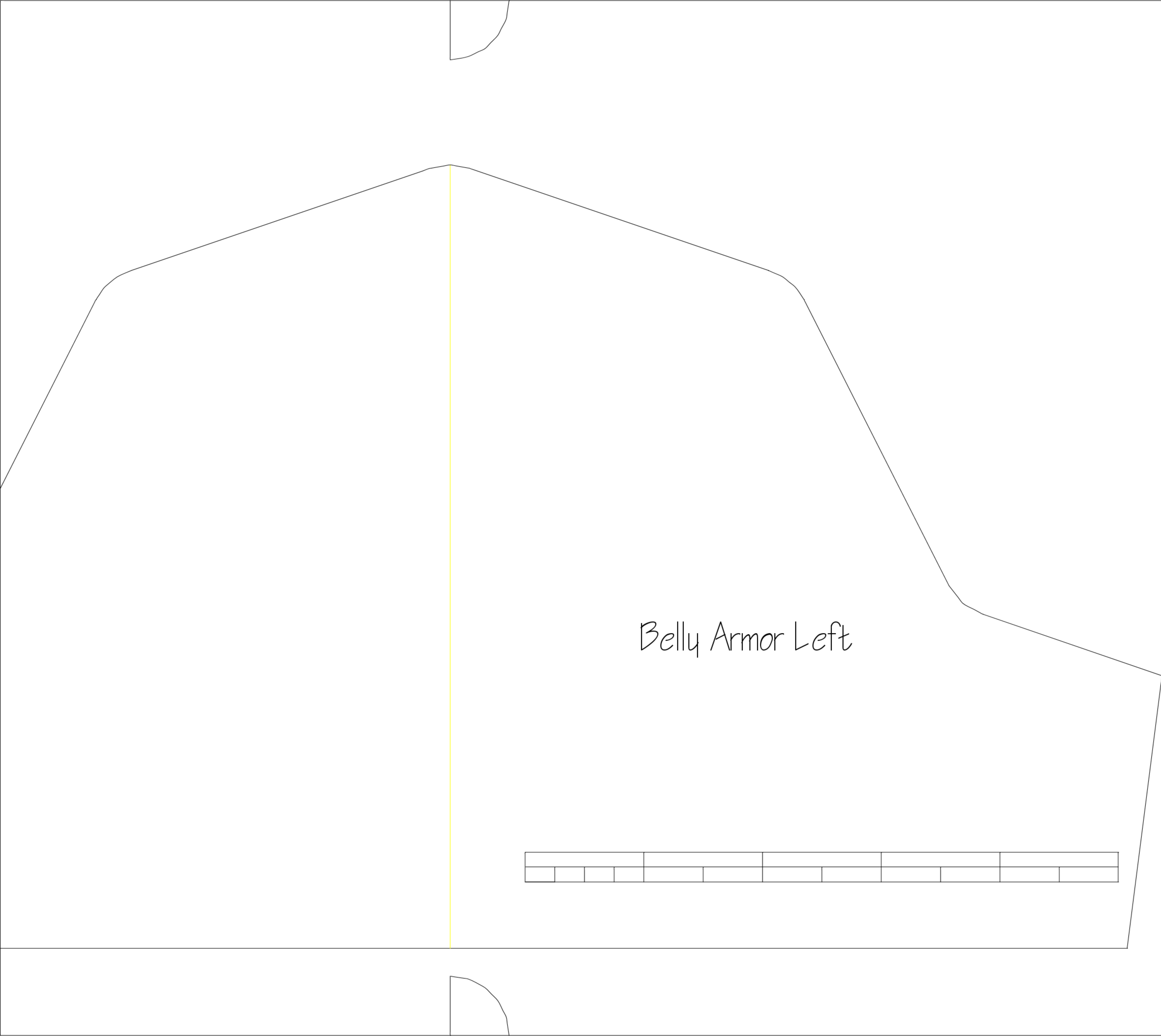


Center Line

Back Armor Right Side
Part 3



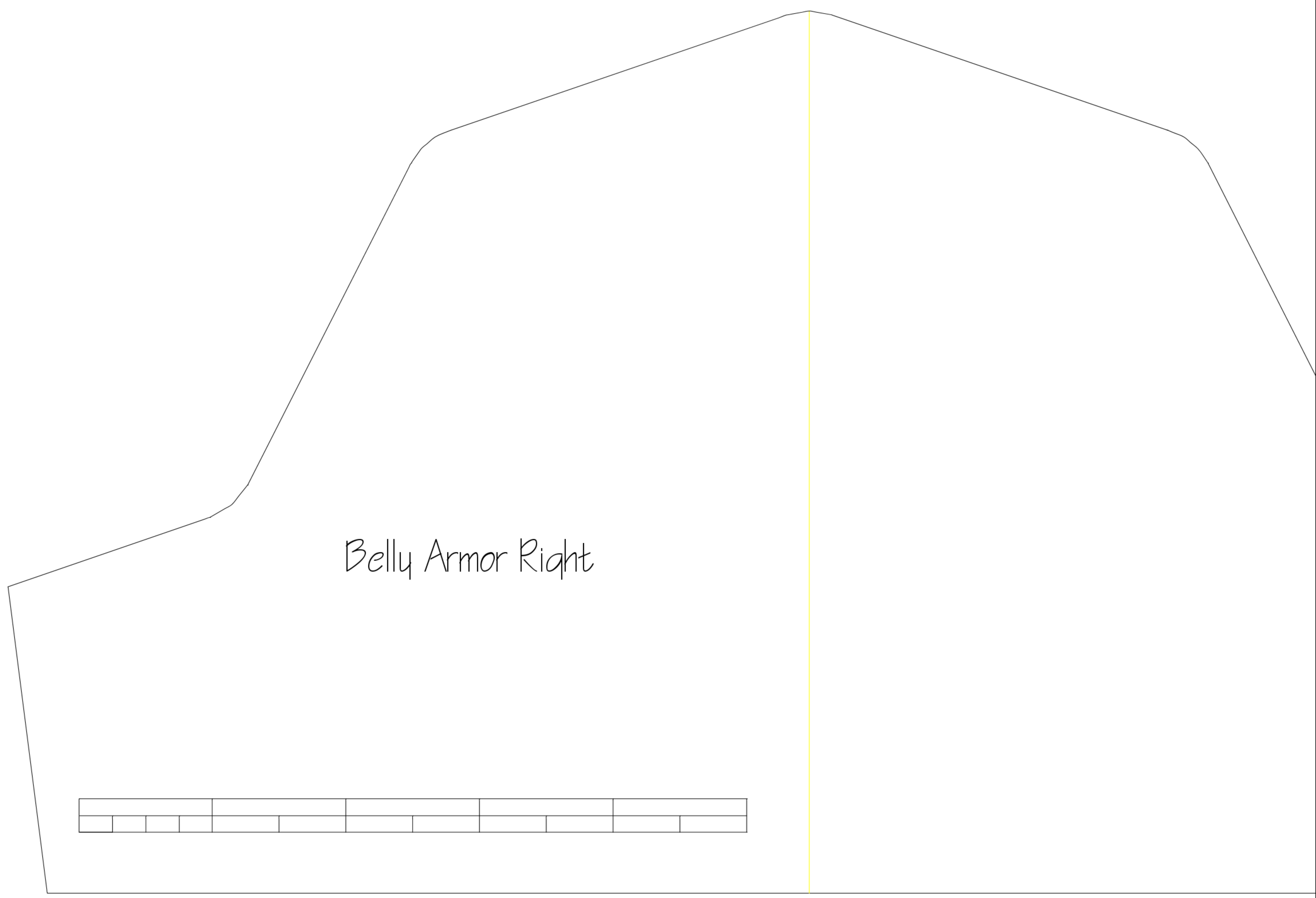
Size - Small



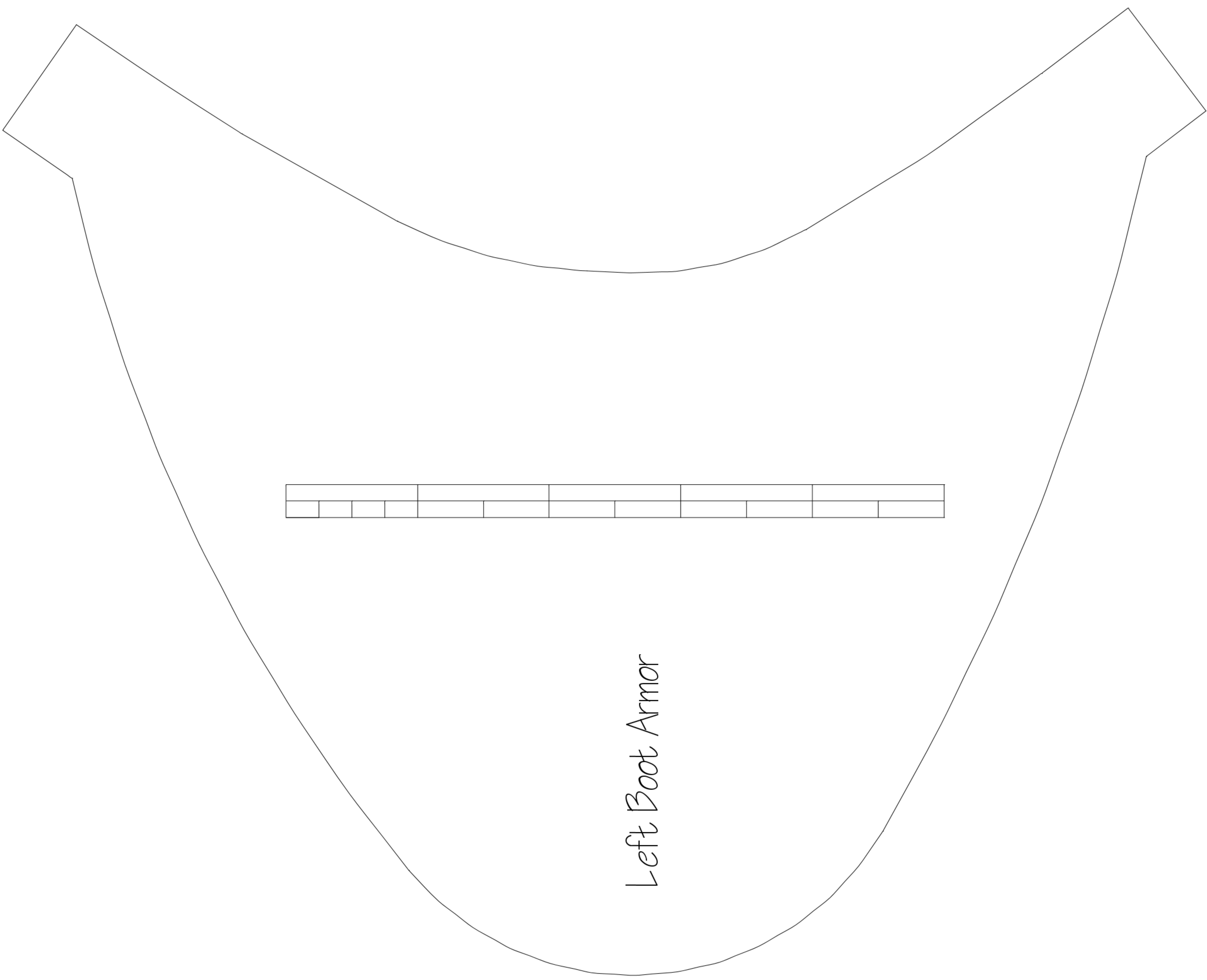
Belly Armor Left

Size - Small

Size - Small

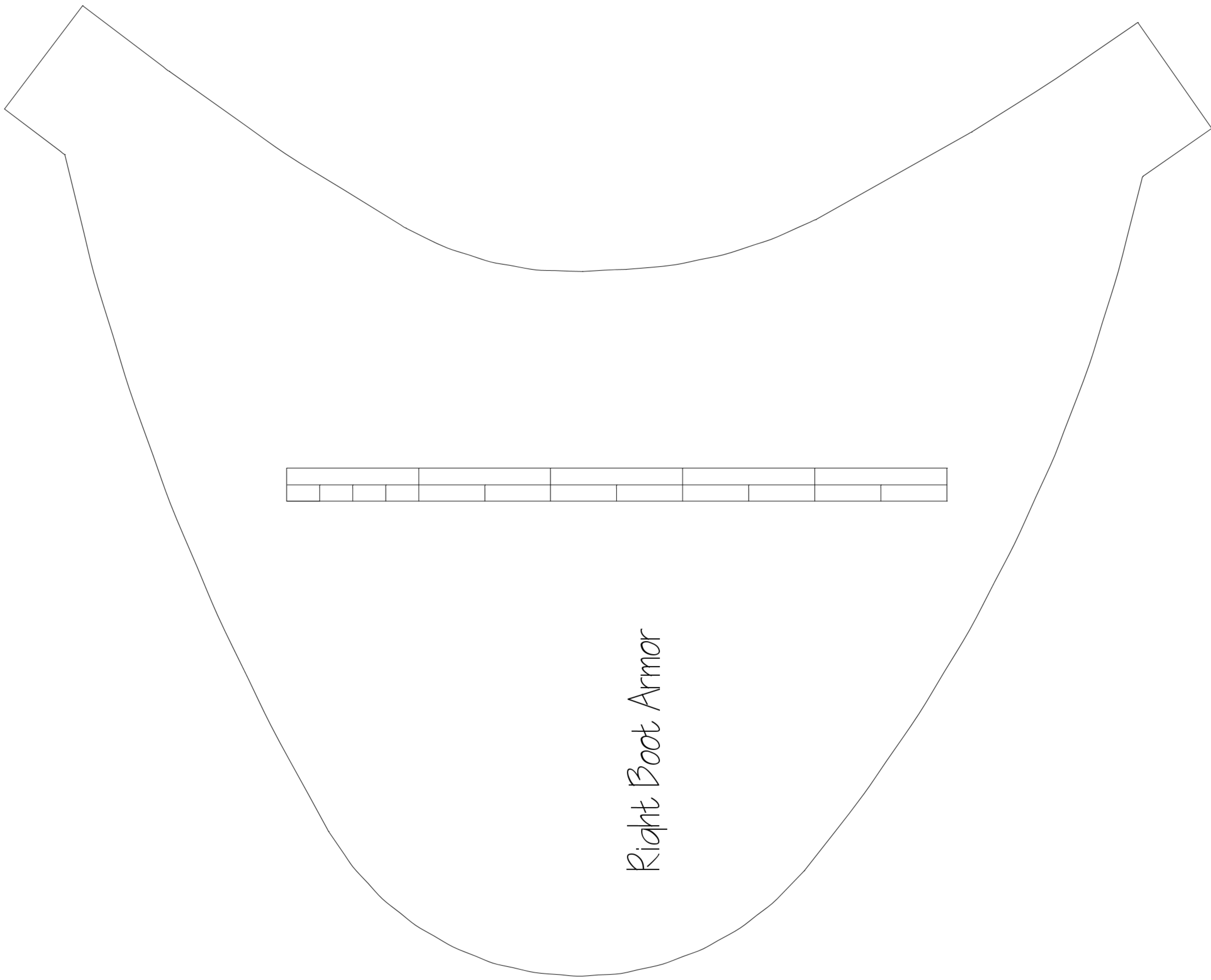


Belly Armor Right



Left Boot Armor

Size - Small



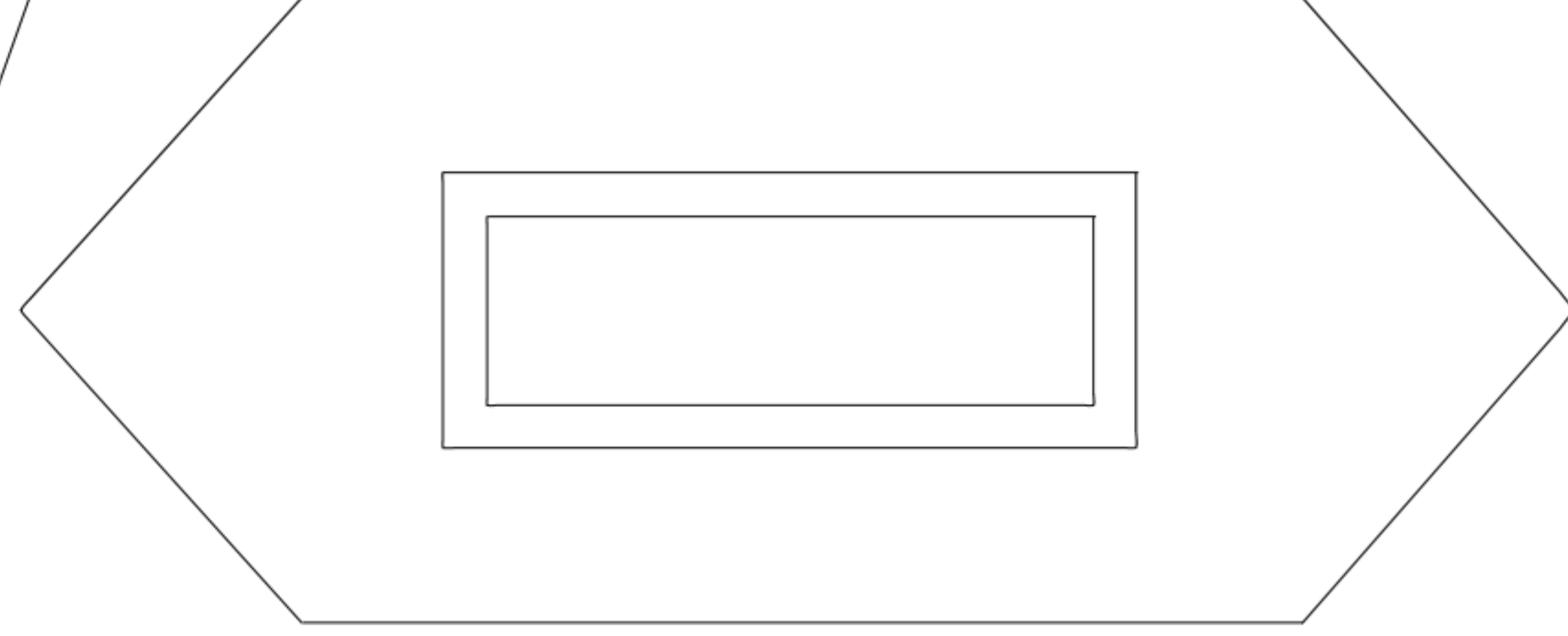
Right Boot Armor

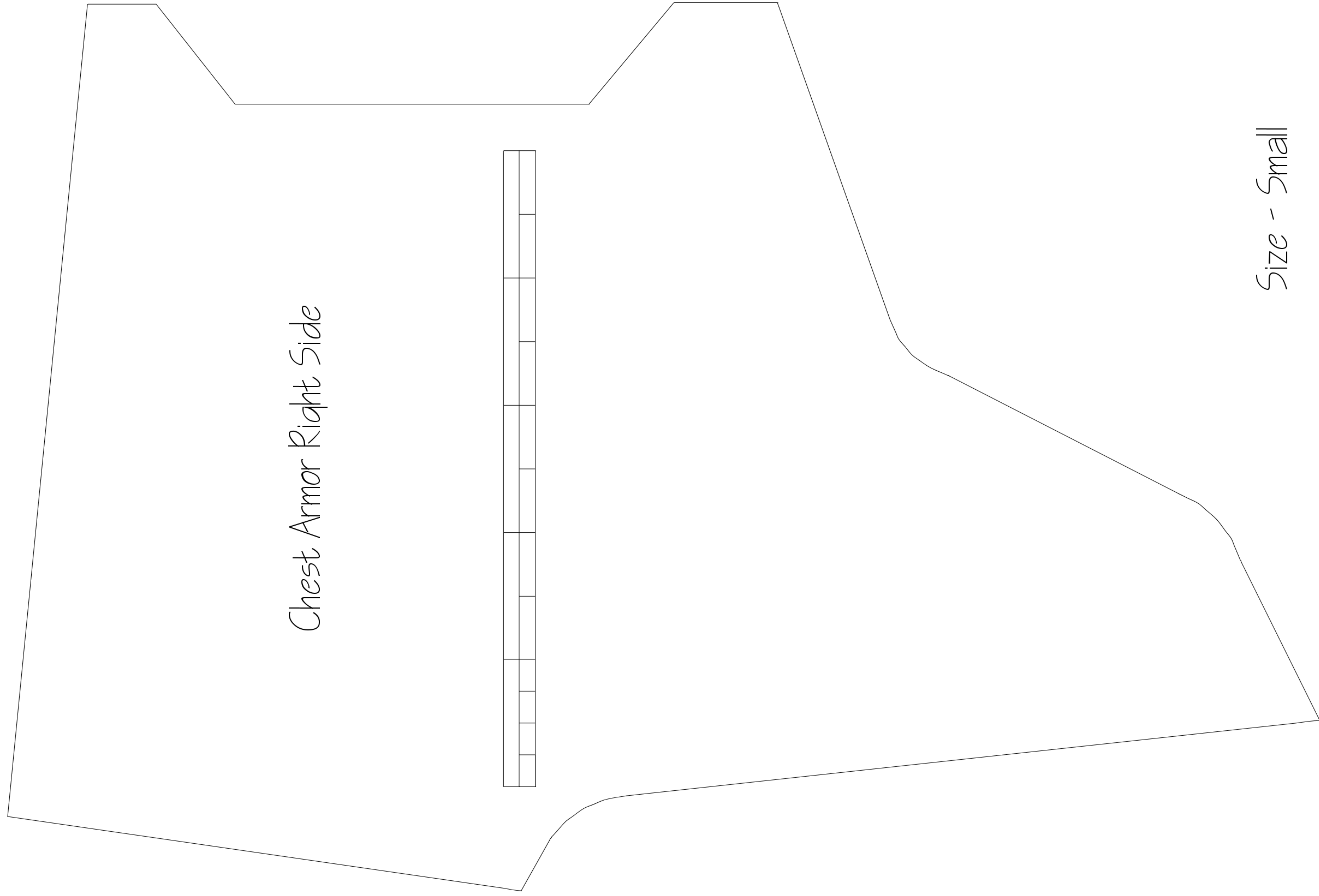
Size - Small

Chest Armor Left Side



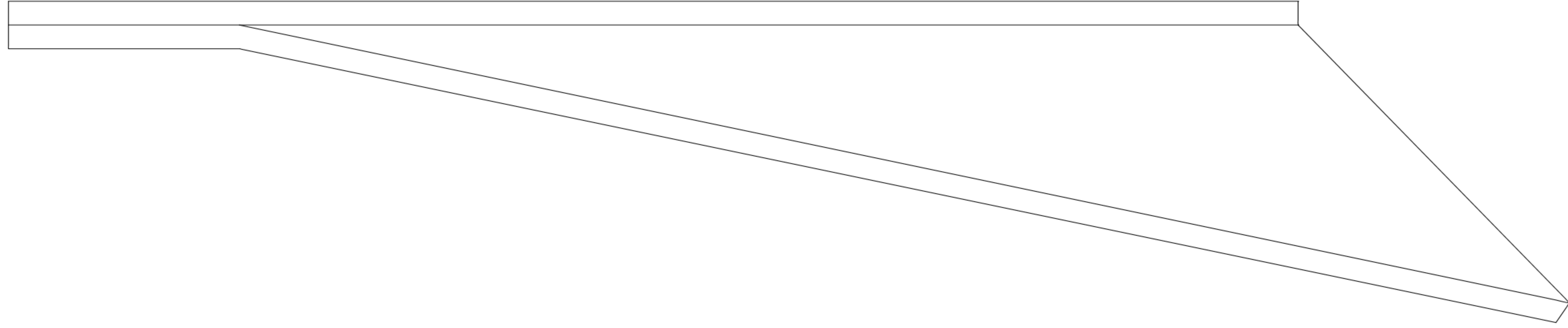
Size - Small



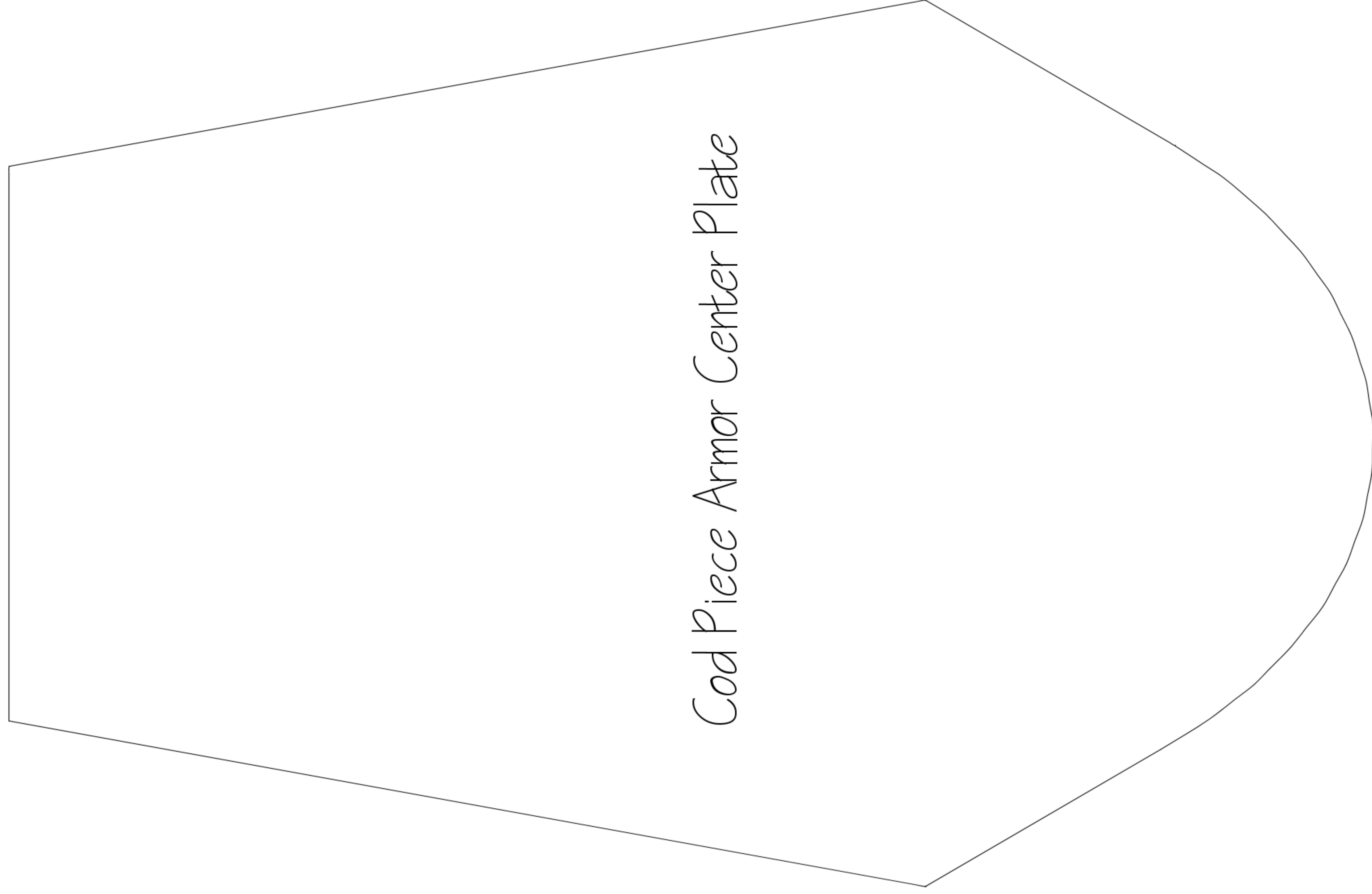


Size - Small

Cod Piece Armor Side View



Cod Piece Armor Center Plate



Cod Piece Armor Left

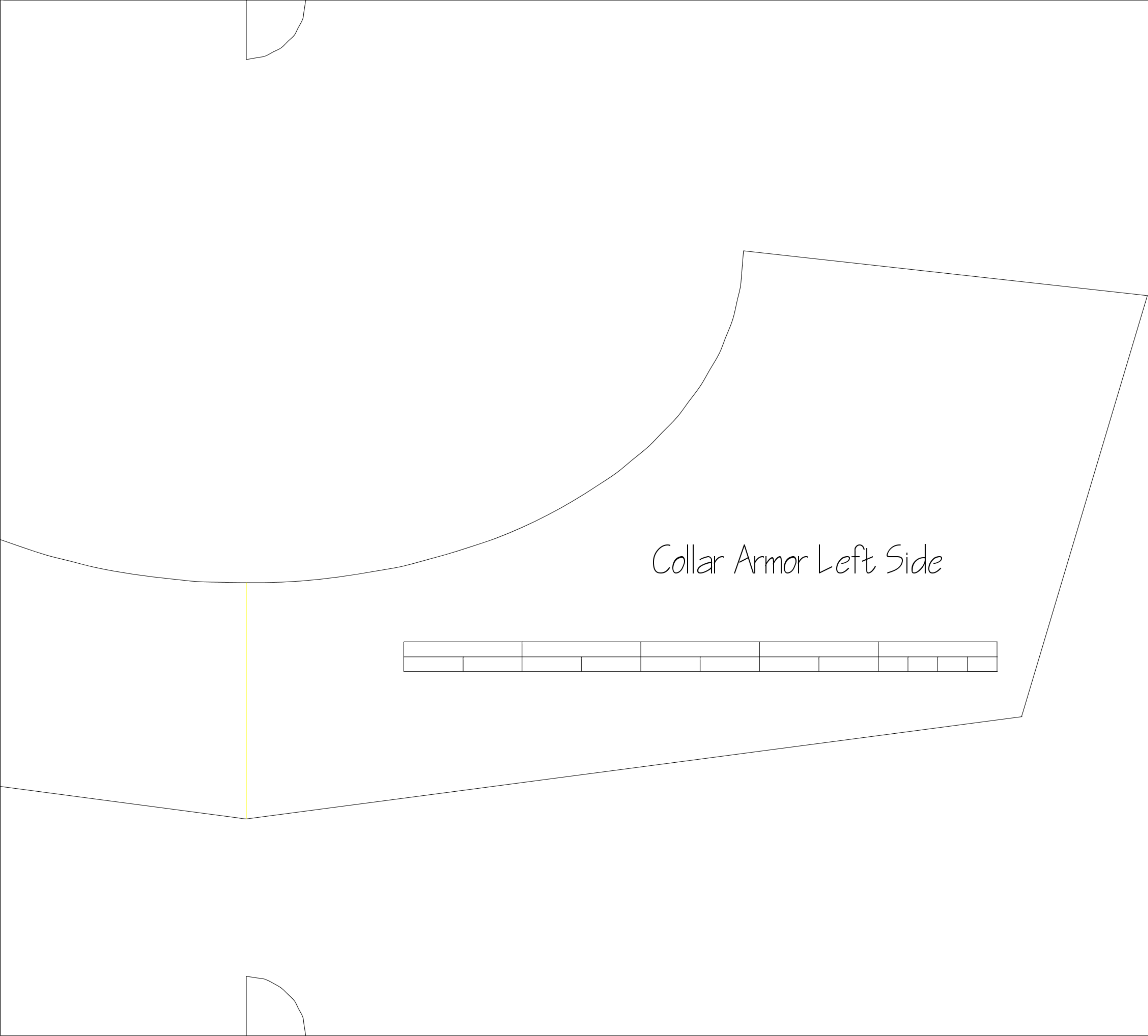


Size - Small

Cod Piece Armor Right



Size - Small

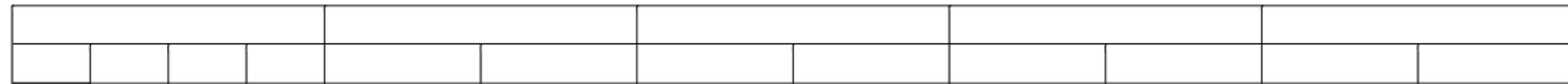


Collar Armor Left Side

Size - Small

Size - small

Collar Armor Right Side



Printer Scale Test Sheet
Assumes .25 inch Boarder

The Scales are 5" in each direction

[illegible]

Shin Armor Front plate
Right Part I

Shin Armor Front Plate
Left Part I

Size - Small

Shin Armor Front plate
Right Part 2

Shin Armor Front Plate
Left Part 2

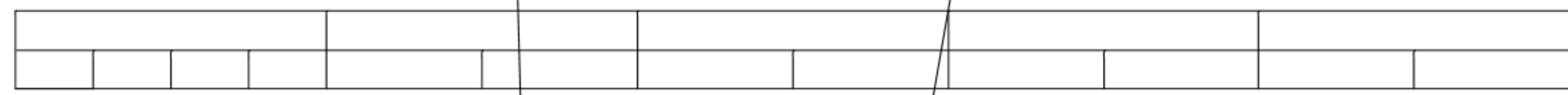
Size - Small

Size - small

Shin Armor Left Part 1

Size - Small

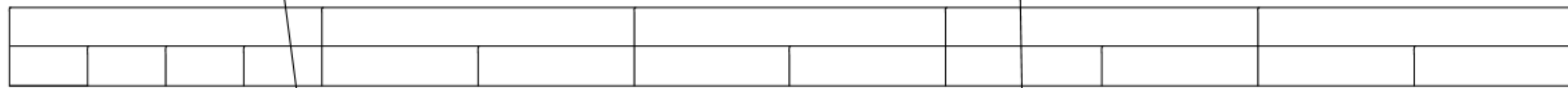
Shin Armor Left
Part 2



Size - Small

Shin Armor Right

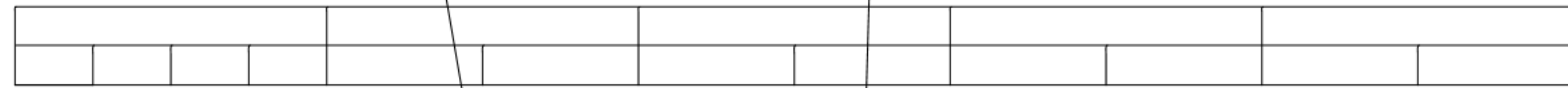
Part 1

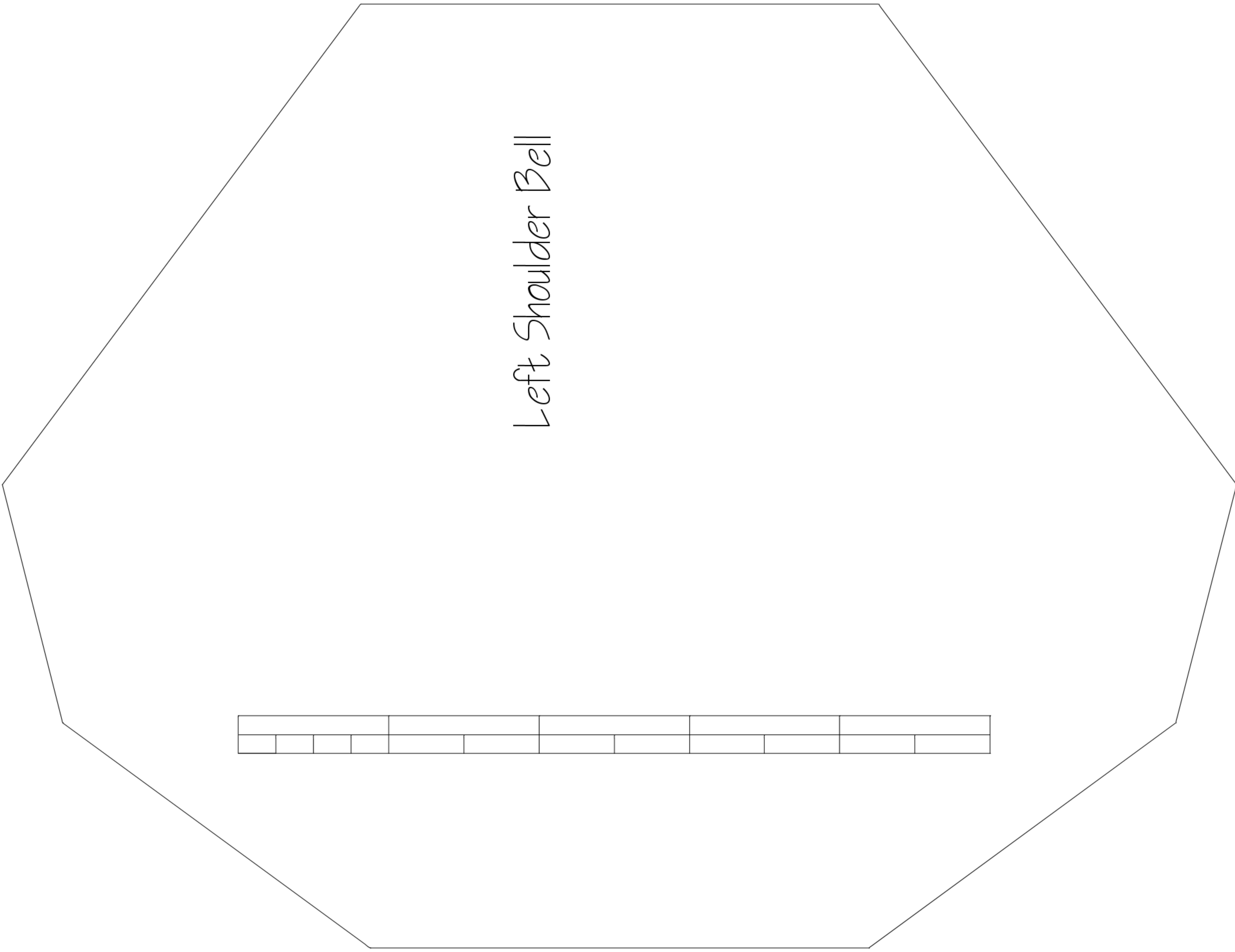


Size - small

Shin Armor Right

Part 2



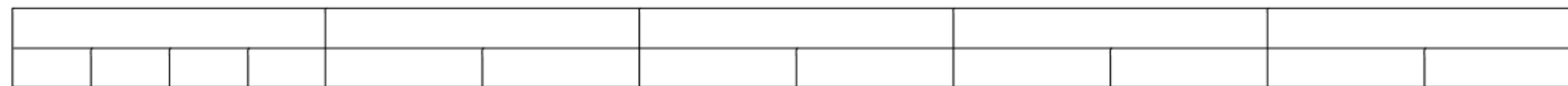


Size - Small

Size - Small

Thigh Armor Left

Part 1



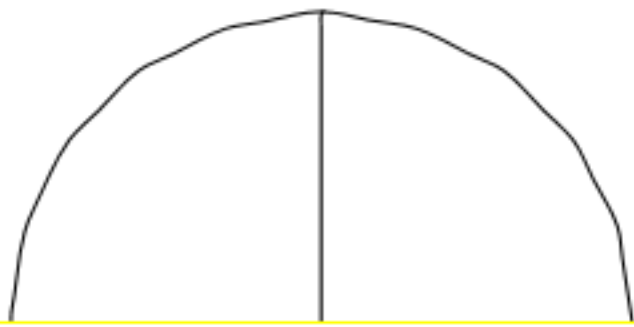
Size - small

Thigh Armor Left

Part 2

Size - Small

Thigh Armor Right
Part I



Size - small

Thigh Armor Right

Part 2
