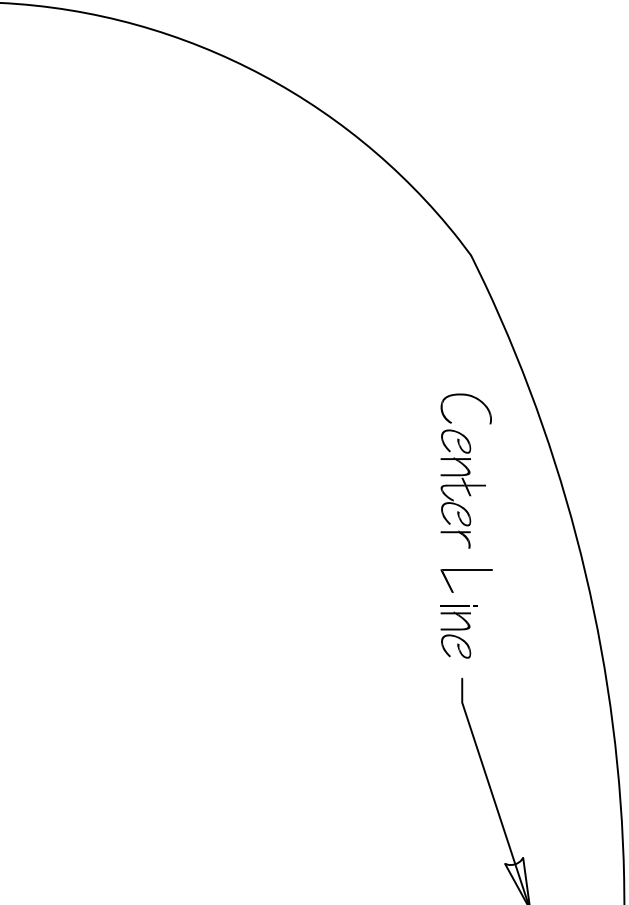
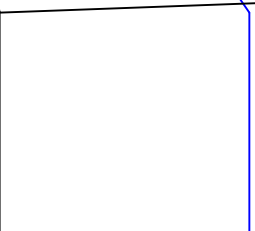
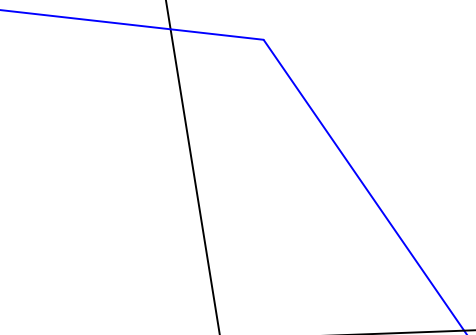
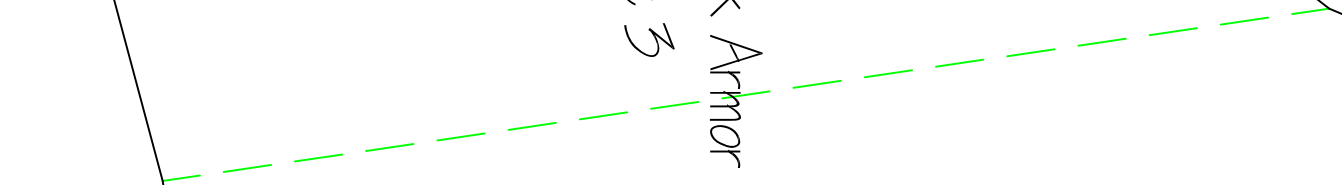




Left Shoulder Bell

Back Armor Left Side  
Part 3

Center Line



Back Armor Left Side  
Part 2

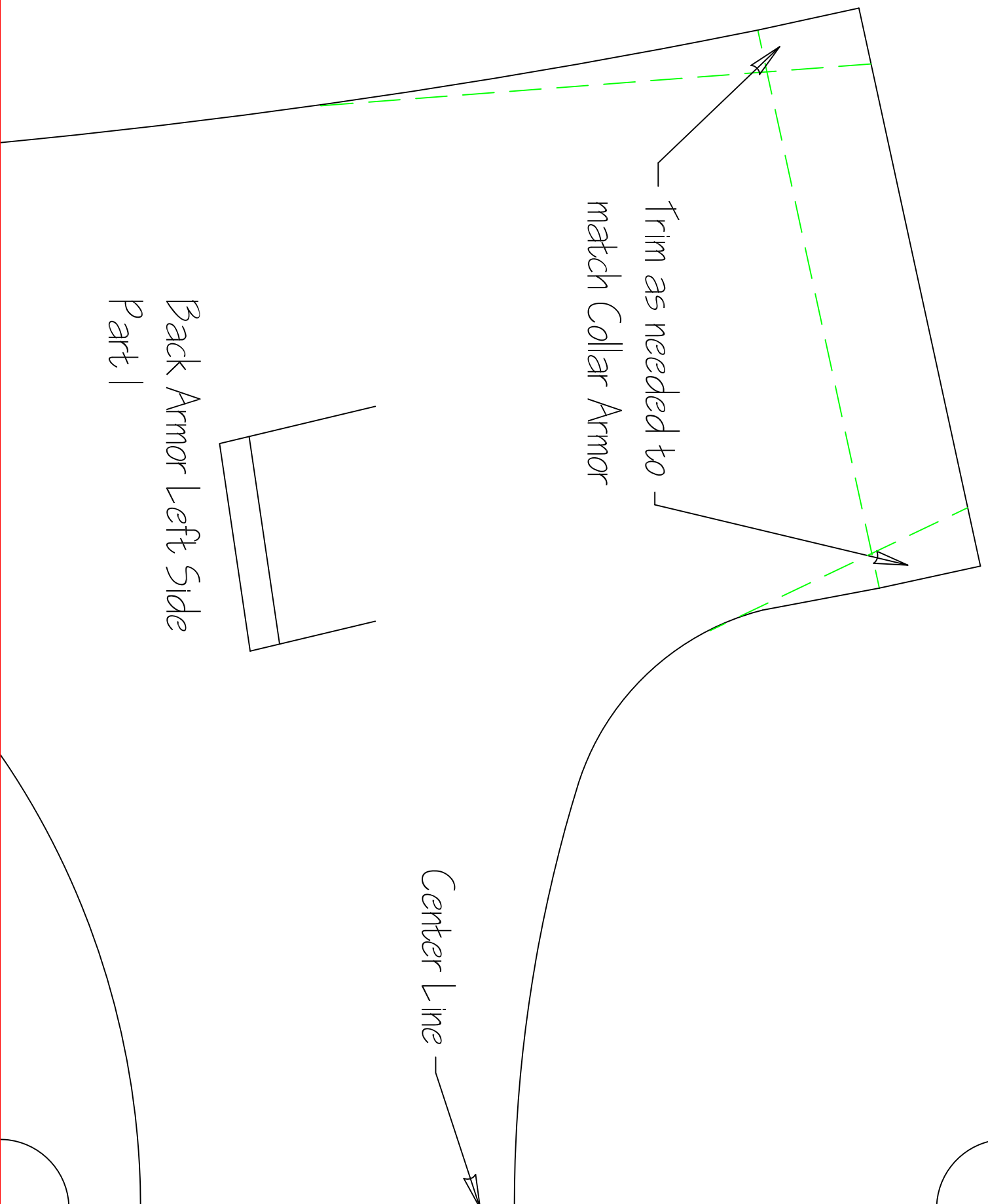
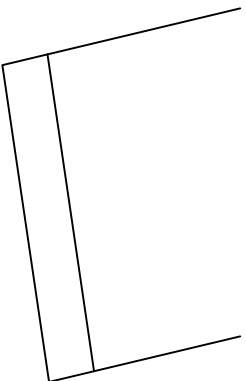
Center Line



Trim as needed to  
match Collar Armor

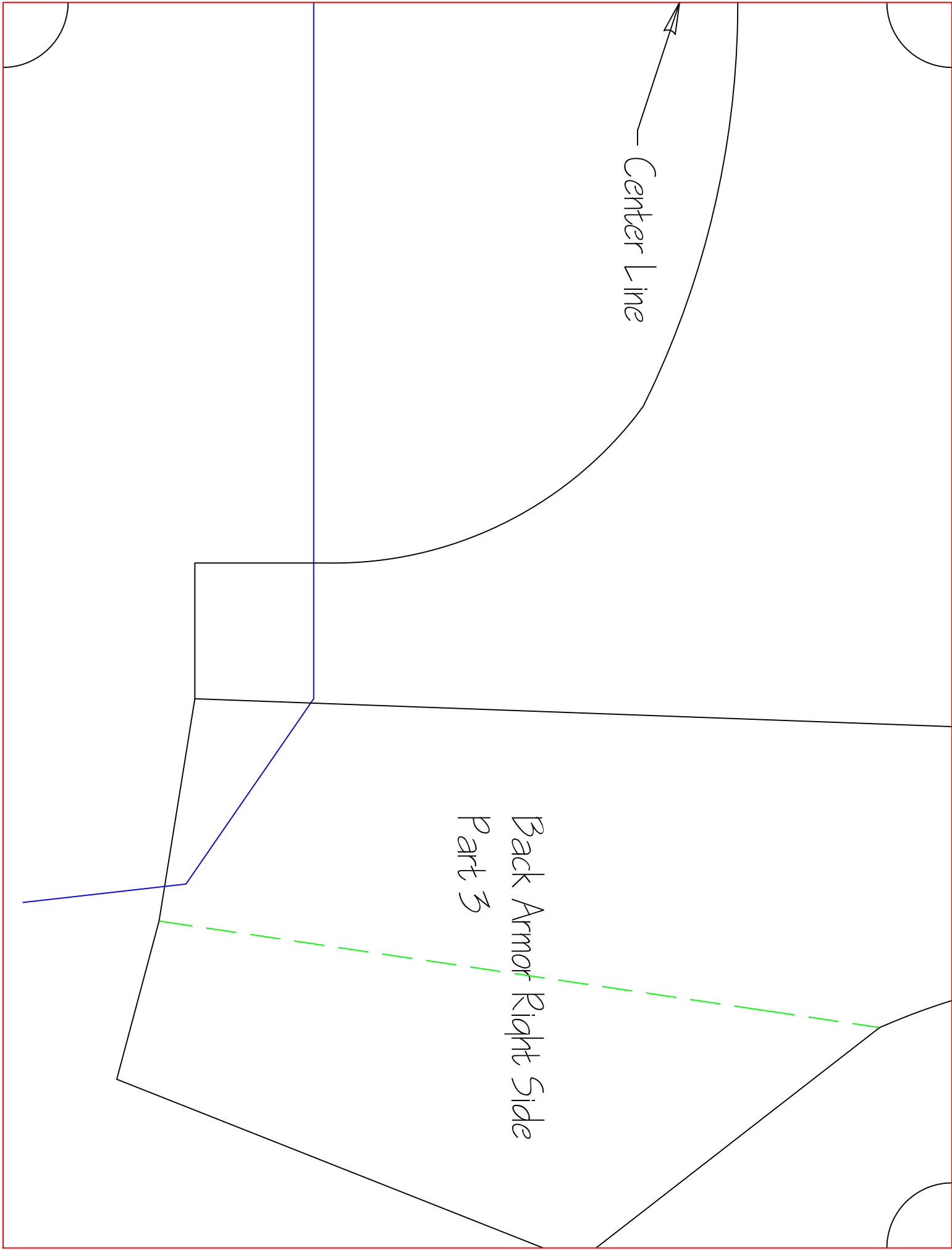
Center Line

Back Armor Left Side  
Part 1



Center Line

Back Armor Right Side  
Part 3



Back Armor Right Side  
Part 2

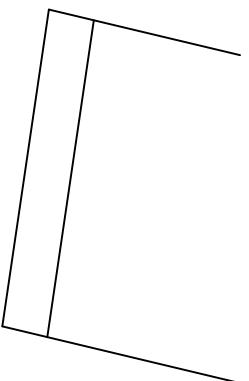
Center Line



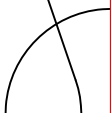
Center Line

Trim as needed to  
match Collar Armor

Back Armor Right Side  
Part 1

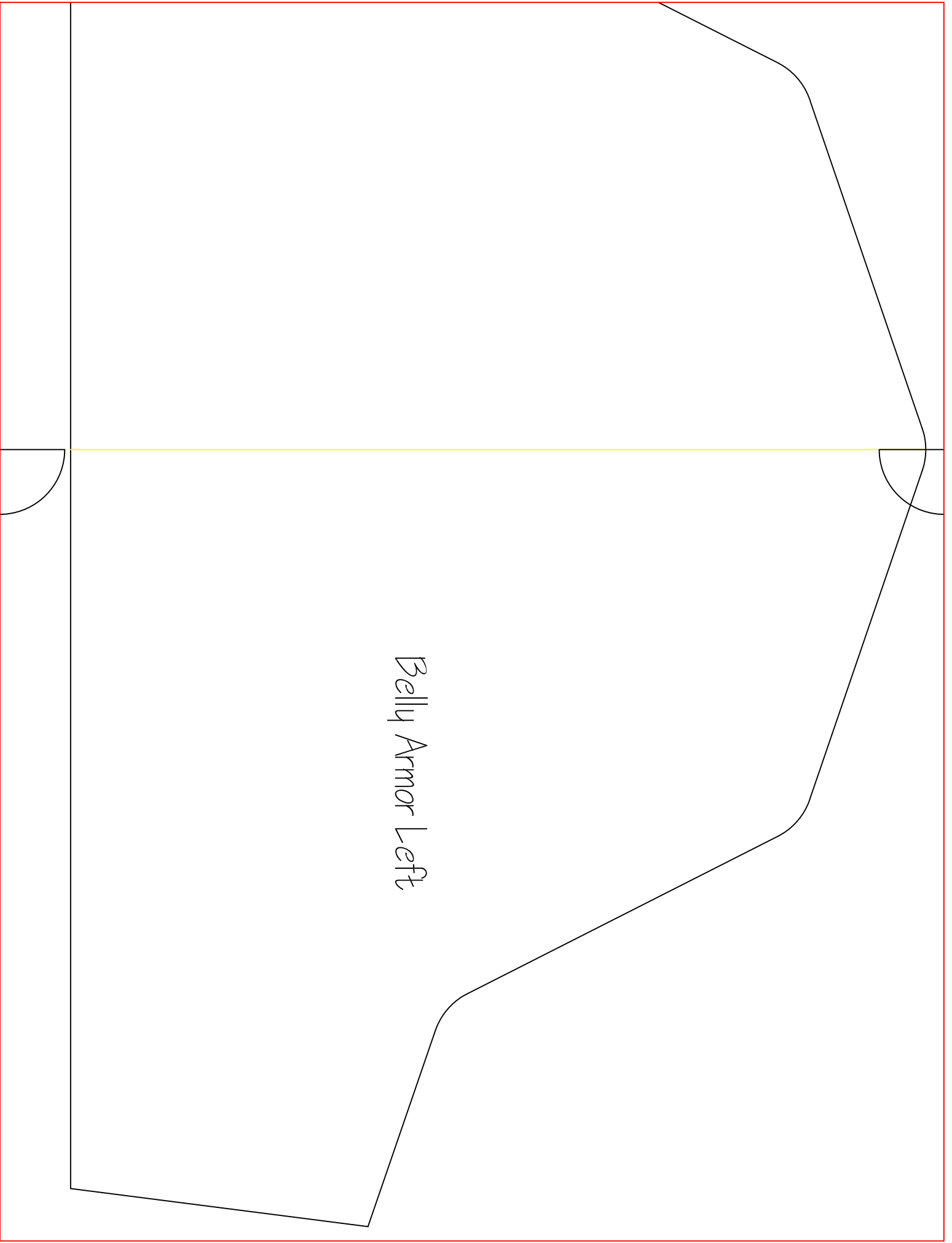


Belly Armor Right

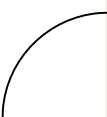
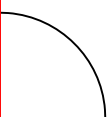


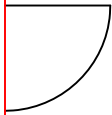
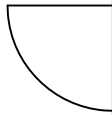


Belly Armor Left



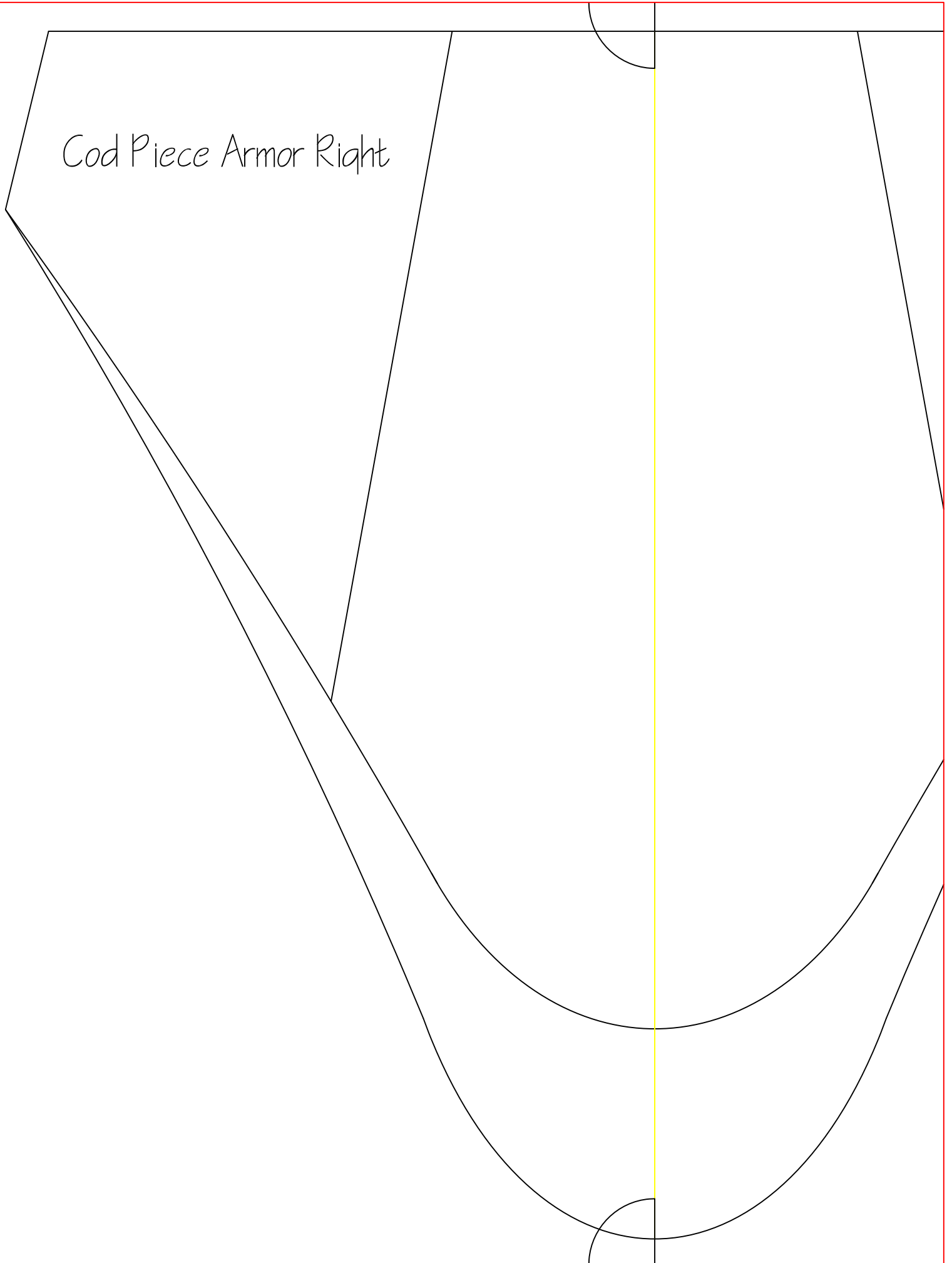
Collar Armor Right Side



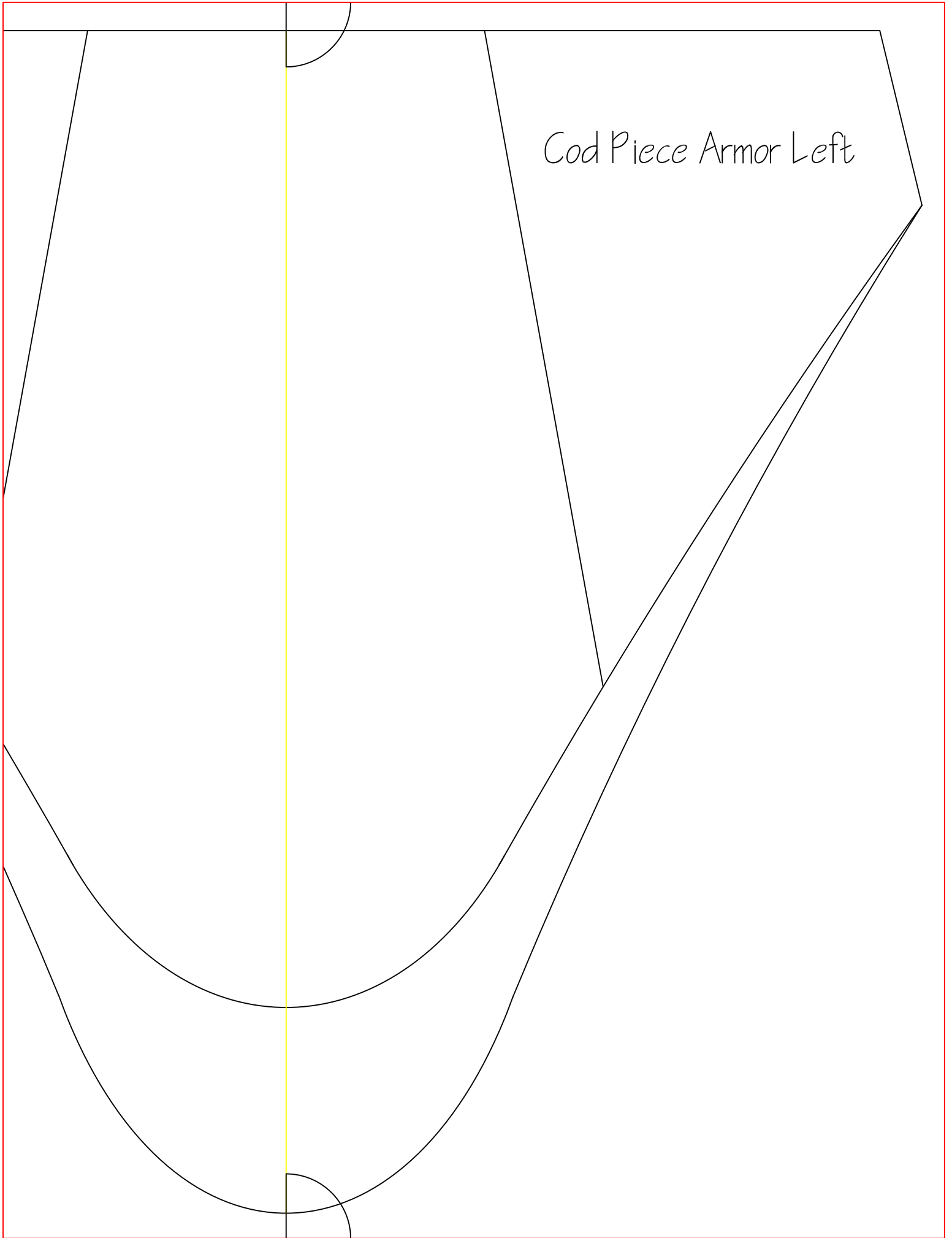


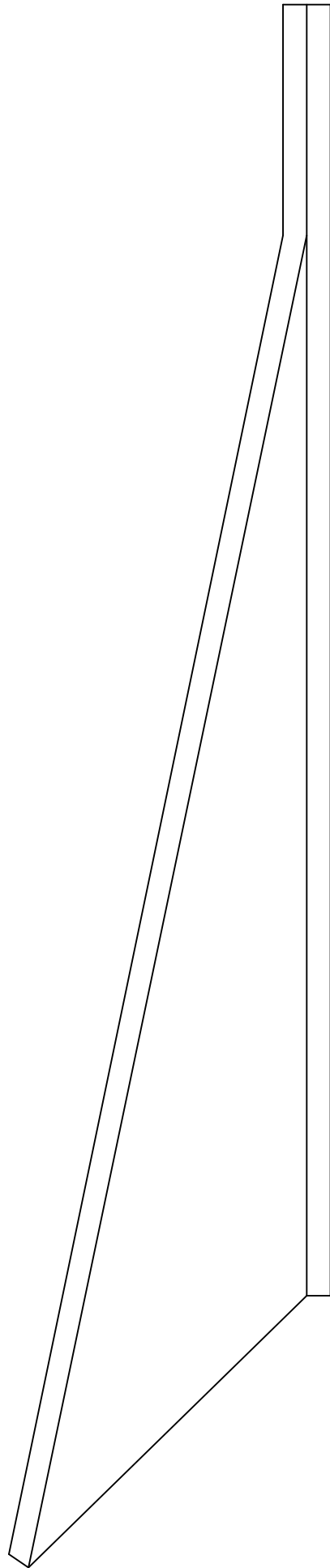
Collar Armor Left Side

Cod Piece Armor Right

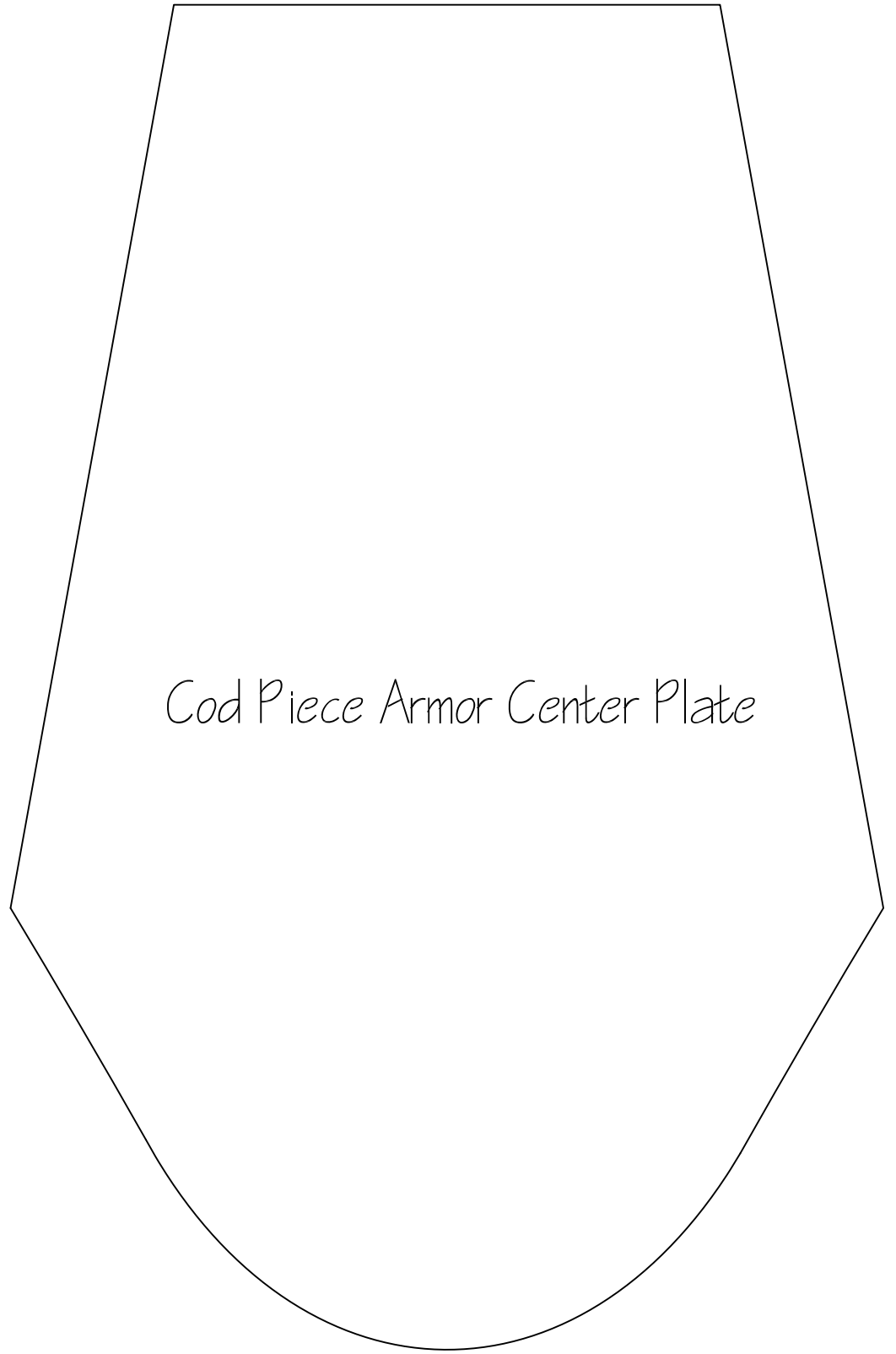


Cod Piece Armor Left

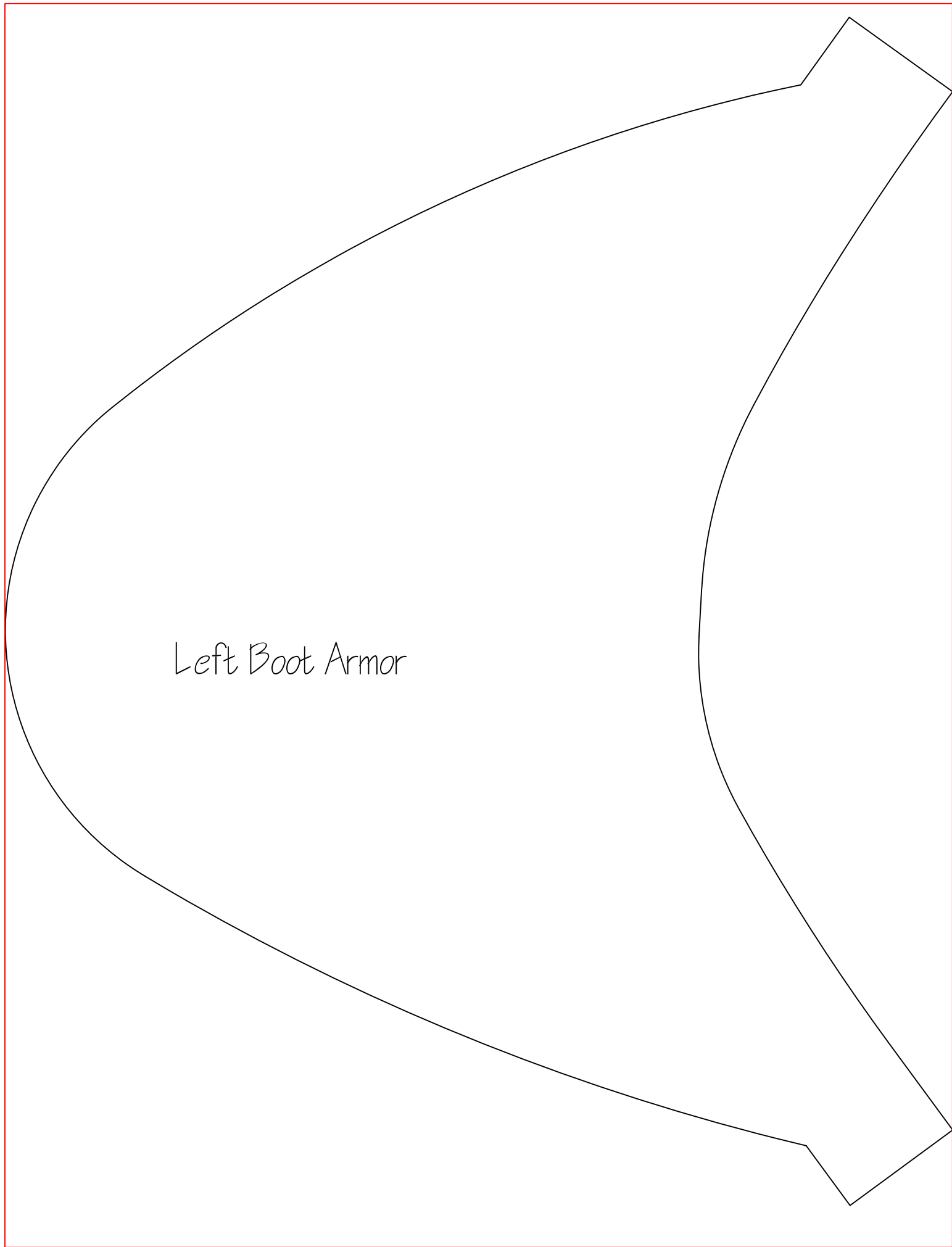




*Cod Piece Armor Center Plate*



*Cod Piece Armor Side View*



Left Boot Armor



Right Boot Armor

The image shows a technical pattern for a right boot armor. It is a large, irregular shape with a curved left side and a more complex right side featuring a large, rounded indentation. The pattern is defined by a single black line on a white background, with a red border around the entire page. The text 'Right Boot Armor' is written in a simple, sans-serif font in the center of the pattern.





Right Shoulder Bell